

DISTINCTIVE
AFRICA



Explore Madagascar

15-days / 14-nights

Itinerary Summary

No.	Date	Location	Details	Meals	Hotel	Nts
1	Day 01	ANTANANARIVO	Arrive into Anananarivo airport and transfer to your hotel	-	Island Continent	1
2	Day 02	AMBOSITRA	Visit Ambatolampy & Antsirabe en-route to Amositra	BL	Artisan Hotel	1
3	Day 03	FIANARANTSOA	Morning at leisure in Ambositra and afternoon transfer to and city tour of Fianarantsoa	B	Villa Sylyestre	1
4	Day 04	RANOHIRA	Transfer to Ranohira, excursions to Ambalavao & Antemoro en-route	B	Motel De L'Isalo	2
	Day 05	RANOHIRA	Day at leisure	B		
5	Day 06	IFATY	Transfer to Ifaty, excursions to Ilakaka & Tulear en-route	B	Belle Vue Ifaty	2
	Day 07	IFATY	Day at leisure	B		
4	Day 08	RANOHIRA	Travel back to Ranohira with a stop at Zombitse en-route	B	Motel De L'Isalo	1
6	Day 09	RANOMAFANA	Transfer to Ranomafana, a stop at Ambalavao on the way	B	Grenat Hotel	2
	Day 10	RANOMAFANA	Day at leisure	B		
7	Day 11	ANTSIRABE	Transfer to Antsirabe	B	Chambre Du Voyageur	1
8	Day 12	ANDASIBE	Early morning drive to Andasibe via Antananarivo	B	Feon'ny Ala	2
	Day 13	ANDASIBE	Day at leisure	B		
1	Day 14	ANTANANARIVO / DEPART	Drive back to Antananarivo, stops a reptile park and places to spot lemurs en-route. You will be taken to the Island Continent Hotel for a day use. Meet	B	-	
	Day 15	UK	Arrive back into London Heathrow via Paris.	-	-	

Itinerary Maps





Day 01 LONDON HEATHROW - PARIS - ANTANANARIVO

Depart Heathrow flying with Air France.



AF1081 Economy Dep: Heathrow 06.55
AF0934 Economy Dep: Paris 11:30

Arr: Paris 09:10
Arr: Antananarivo 22:55

You will be met on arrival and taken to your hotel for the night where you can relax after your journey.

Island Continent Hotel



1 x Standard Room on a Bed and Breakfast basis for 1-night

Island Continent Hotel is a small boutique hotel located in a quiet area just a few minutes from the international airport serving Antananarivo, the capital of Madagascar. Located on a hilltop overlooking a local village and countryside the hotel is built in the traditional style of the highlands of Madagascar. There are 36 cosy rooms decorated with local arts and crafts. Each room has an en-suite bathroom, spacious veranda, television, telephone, mini bar and free Wifi access. The hotel has a large swimming pool set in the beautiful gardens. The restaurant, within the hotel, serves excellent international and local cuisine.



Day 02 ANTANANARIVO - AMBOSITRA

You will leave Antananarivo this morning after breakfast and head to Ambositra stopping at Ambatolampy on the way. Ambatolampy is a city built on a flat rock and is an agricultural town. The city is also known for age-old foundries, the working of these is a technique passed down from father to son. You will continue on to Antsirabe for lunch and then on to Ambositra, driving alongside terraced rice paddies and hills and streams. You will check in to your hotel and relax.

Artisan Hotel



1 x Standard Room on a Bed and Breakfast basis for 1-night

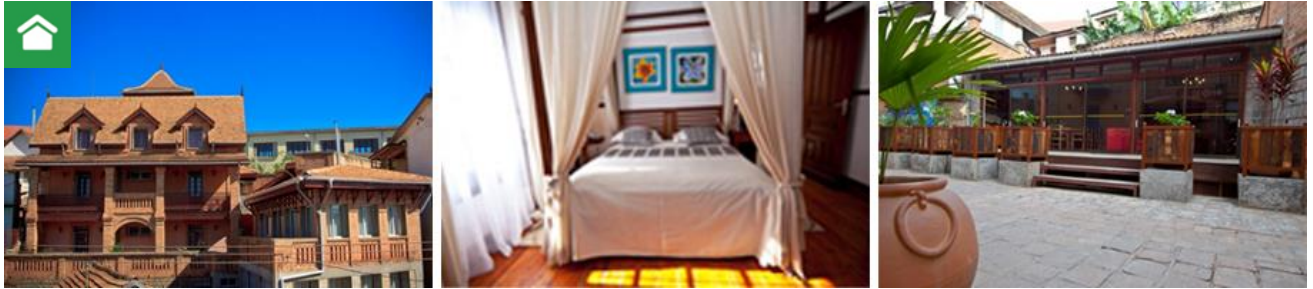
The Artisan Hotel is located in the centre of Ambositra and has a lovely garden and relaxing atmosphere. The hotel has eight rooms and 10 bungalows of which all are en-suite with private toilette and shower. The hotel has a traditional Malagasy restaurant that also serves international cuisine.



Day 03 AMBOSITRA – FIANARANTSOA

You will have some time this morning to explore Ambositra before heading towards Fianarantsoa. Ambositra is at the centre of Madagascar’s wood carving craft. The architecture of the colourful houses is fantastic with ornately carved wooden balconies and shutters. You will pass more terraced rice paddies and pine and eucalyptus forests on the drive to Fianarantsoa with your private vehicle and driver guide. You can enjoy a city tour of Fianarantsoa before checking into your hotel for the night.

Villa Sylvestre



1 x Standard Room on a Bed and Breakfast basis for 1-night

This charming, traditionally Malagasy residence was built in 1920 in the centre of Betsileo. The large and comfortable rooms are decorated in a traditional but modern style which appeals to international standards. Each room has Wifi, television, safe and minibar. There is also a laundry service on offer from the hotel.





Day 04 FIANARANTSOA - RANOHIRA (ISALO)

This morning you will drive south to Ranahira (Isalo) stopping at several points of interest along the route. You're first stop is Ambalavao, the centre of the Malgasy wine industry. You will visit a wine maker for tasting and a tour. You will continue on to Anteimoro and visit the local paper factory, a relic of the Arabian presence on the island. From Anteimoro you will go to the Anja community park, which is run by the local village and part of the income from the park helps to pay for teachers in the local school. You can enjoy a visit to the park where you will see ring tailed lemurs as well as Chameleons and a wide variety of fantastic insects and birdlife.



After your visit to Anja you head to Ihosy, the capital of the Bara tribes. You drive along the Andringitra mountain chain which marks the transition between the green highlands and the dry south of Madagascar.



Arriving to Isalo at the end of the afternoon you will check in to your hotel and enjoy the stunning scenery.

Motel De L'Isalo

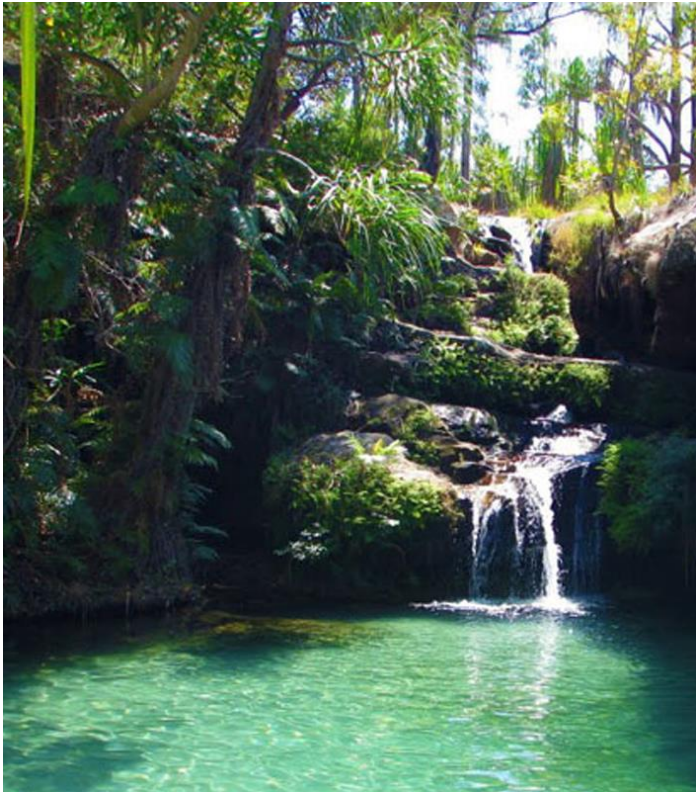


1 x Standard Room on a Bed and Breakfast basis for 2-nights

The Motel De L'Isalo is perfectly situated on the edge of the Isalo National Park and close to the Maki and Rats Canyon which is perfect for exploring the area. The 65 comfortable bungalows, built of local materials, all have hot water and electricity. The entire property is very peaceful and there is nothing better than enjoying a cocktail around the swimming pool as the sun sets!

↙ **Day 05 RANOHIRA (ISALO)**

Day at leisure to explore and enjoy Isalo. Like a fun sized Grand Canyon, Isalo National Park is a stunning and unique landscape carved out of sandstone.



Considered to be a sacred place, the Bara tribe seal their coffins into the cliffs with mounds of stones. Shaped by the wind over millennia, this is a barren paradise of unusual rock formations, canyons, gorges and grasslands. Hiking on one of the many trails you will discover unusual flora and fauna; the park is home to Ringtail, Brown and Sifaka Lemur as well as rare Elephant Foot Plants. Treks generally last for a few hours; but whatever the length, a refreshing dip in one of the numerous natural pools is a must!





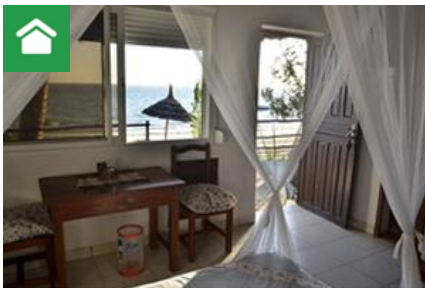
Day 06 RANOHIRA (ISALO) - IFATY

After breakfast, head on to Tuléar, stopping in Ilakaka along the way. Ilakaka is a tiny village transformed into a busy town since the discovery of sapphire around 15 years ago. From there, the landscape changes into drier vegetation, where tamarind and mango trees dominate. Trees become fewer, giving way to grassland and thorny bush. You continue on to the 'Plateaux de Baobabs of Andranomaintso' where you will see two species of Baobab, only found in Madagascar.



You continue to Tulear where you will enjoy a city tour before heading on to Ifaty. Driving along sandy roads the transfer is only 25 km although can take two to three hours due to the condition of the tracks. This is the driest part of the country in the deep south and the landscape is dominated by the spiny forest. You will check in to your hotel mid to late afternoon.

Belle Vue Ifaty



1 x Standard Room on a Bed and Breakfast basis for 2-nights

The Belle Vue Hotel has magnificent views of the Ifaty lagoon and is set on a large sandy beach. This small hotel offers 29 rooms in total, each decorated with murals from a local artist, reproducing scenes of typical Malagasy lives. The daily spectacle of the local fishermen going out for the day and returning with their catch is a delightful way to pass some time in this stunning setting. The hotel has recently had solar panels installed providing 24 hour electricity.



Day 07 IFATY

Day at leisure to explore Ifaty or just relax and enjoy the beautiful beach. Ifaty on the west coast is a popular spot for relaxation with sandy beaches and extensive barrier reef. The nearby islet of Nosy Be offers exceptional snorkelling and inland the spiny forest is a haven for rare endemic birds.

 **Day 08** IFATY – RANOHIRA (ISALO)

After breakfast drive back northwards to Isalo. On the way, stop and visit the Zombitse forest which became a National Park a few years ago. This is a semi-dry tropical forest which stretches from the west. It is home to endemic birds of Madagascar and six species of lemurs.



You will walk along trails in the forest where you will hopefully spot some of the birds and lemurs. You will arrive into Isalo in the afternoon where you can settle into your hotel for the night.



Motel De L'Isalo

1 x Standard Room on a Bed & Breakfast basis for 1-night





Day 09 RANOHIRA (ISALO) – RANOMAFANA

Today you drive northward to Ranomafana, passing Ambalavao on the way. The landscape changes to fresh and green highlands.



You continue to Ranomafana where you will arrive late afternoon and check in to your hotel. Covering an area of primary and secondary rainforest running down Madagascar’s east coast, Ranomafana National Park was originally created to protect the Rare Golden Bamboo Lemur, discovered here in 1986. The wealth of wildlife includes 12 species of lemur and a variety of reptiles, butterflies and insects which can be enjoyed from a number of walking trails. The name Ranomafana means hot water, so if the walking gets too strenuous, relax in the country’s finest hot springs or take a refreshing dip in the Namorona River. Night walks will reward you with a whole host of nocturnal activity.

Grenat Hotel



1 x Standard Room on a Bed and Breakfast basis for 2-nights

The Grenat Hotel is located close to Ranomafana National Park and in the heart of the Ranomafana village, known for its thermal springs. There are only 14 rooms at the hotel and the accommodation is charming, all with private bathrooms and mosquito nets and with views of the beautifully maintained gardens or the national park. Food is all local, freshly prepared and served in a large dining room. There is also free Wifi available at the hotel.



Day 10 RANOMAFANA

Day at leisure in Ranomafana to enjoy activities. You will enjoy a four hour expedition in the forest with a local guide to hopefully see some of the 12 species of lemurs.



Ranomafana is the most important site of lemurs in Madagascar, it is the only confirmed site for the two rarest species: the greater bamboo lemur and the golden bamboo lemur. Additional species are also seen here. More than 100 birds, reptiles, lizards, butterflies and other insects have been recorded in this park.

The area is covered with forest, in the higher areas the trees are festooned with mosses and lichens, much of this secondary forest is dominated by the introduced tree *Psidium cattlejarum*, also giant bamboo *Cephalostacyum viguieri*. Various orchids such as *Bblophyllum* and *Eulophiella* can be seen. Steep mountains with dramatic waterfalls and natural hot springs make this endangered and exotic forest charming and unusual. The name Ranomafana means 'hot water' and visitors can relax in the hot spring water.



Day 11 RANOMAFANA – ANTSIRABE

Depart after breakfast for Antsirabe. Best known as being the beer brewing centre of Madagascar, Antsirabe, located in Madagascar’s Central Highlands, is a delightful colonial spa town and which still boasts a faded grandeur from its glory days of the past.



The baths are still here and hundreds of people a day still visit to bath in the hot spring waters. This bustling town has pleasant tree-lined boulevards and colour is added from the busy markets and many passing tradesman. Enjoy a tour of the city and then check in to your hotel.

Chambre Du Voyageur



1 x Standard Room on a Bed and Breakfast basis for 1-night

The Chambre Du Voyager is located close to the centre of the ancient colonial spa town of Antsirabe. This small eco-lodge enjoys a unique setting, located in the heart of a beautiful botanical garden with a unique water feature allowing guests to watch turtles and chameleons. The 10 bungalows are basic, however, all come with a private bathroom and garden area. The restaurant serves local and international cuisine. The staff are always happy to help to advise you of local tourist spots and you are always greeted with a smile here.

 **Day 12 ANTSIRABE - ANDASIBE**

You will have an early breakfast this morning and start your drive to Andasibe via Antananarivo. You will pass through the green landscape of the east. You will enter the humid part of the country with many primary rainforests. You will arrive in Andasibe mid to late-afternoon.



Andasibe (Perinet) is one of the most visited reserves in Madagascar. This reserve, together with Mantadia, makes up the Andasibe Mantadia National Park. This area of damp montane forest is home to a variety of lemurs, birds and chameleons. The park is particularly noted for its large number of Indri Indri, a black and white teddy bear like lemur which can grow to over 1 metre tall.



These creatures are very agile and athletic, often leaping large distances and have a haunting cry that can be heard several kilometres away. To the north, the reserve of Mantadia has rugged walking trails through primary rainforest and a diversity of wildlife. Birdwatching is particularly good with a number of rare species including Ground Rollers and the Red Owl. The nearby Vakona Private Reserve gives you a chance to glimpse a fossa, a mongoose like animal which is Madagascar's largest carnivore. Check in to your hotel for the next 2 nights.

Feon'ny Ala



1 x Standard Room on a Bed and Breakfast basis for 2-nights

The Feon'ny Ala is a lovely hotel surrounded by typical Malagasy forest and is located near to the Anlazaotra reserve. The hotel's name, translated literally means 'voice of the forest'. This reflects the enchanting setting where it is located – you will hear the night-time calls of the Indri Indri, the largest lemur in Madagascar. The hotel consists of a dining room and 20 bungalows, built of local materials and equipped with private bathrooms with hot water and a lovely veranda. The restaurant serves local and Asian influenced cuisine.

 **Day 13 ANDASIBE**

Day at leisure to enjoy the Andasibe area. After breakfast, 3 to 4 hours hike in the Andasibe National Park. This 810 ha reserve is also home to numerous unique wildlife and contains a wide variety of orchids, canopy, endemic animals like chameleons, tenrecs, and many birds. After the hike, you will visit Andasibe village, a typical village and see how the local people cultivate rice and vegetables.

 **Day 14 ANDASIBE - ANTANANARIVO**

Today you will drive back to Antananarivo stopping along the way to visit Pyereras to see the Reptile Park. On a walk inside the forest, you will hopefully spot 2 species of lemurs: the sifaka Coquereli and the brown lemurs Fulvus as well as many insects and birds.




On arrival in Antananarivo you will enjoy a city tour. Called Tananarive in french and commonly known as Tana, the capital of Madagascar is located in the centre of this huge island and it is built on a rocky, sloping ridge, four kilometres in length and 1.2 kilometres high. Tana is the biggest city in Madagascar.

Unlike most capital cities in southern Africa Antananarivo was already a major city before the colonial era. It was founded in about 1625 by King Andrianjaka and takes its name (the City of the Thousand) from the number of soldiers Andrianjaka assigned to guarding it. For a long time it was the principal village of the Hova chiefs, Antananarivo became more important as those chiefs made themselves sovereigns of the greater part of Madagascar, until it became a town of some 80,000 inhabitants. In 1793 it was made the capital of the Merina kings.

The conquests of King Radama I made Antananarivo the capital of almost all of Madagascar. Until 1869 all buildings within the city proper were of wood or rushes, but even then it possessed several timber palaces of considerable size, the largest being 37 m high. These crown the summit of the central portion of the ridge; and the largest palace, with its lofty roof and towers.

After your city tour of Antananarivo you will be taken to the Island Continent Hotel for a day use room where you can freshen up and use the facilities within the hotel before being taken back to the airport to check in for your flights back to the UK via Paris with Air France.

 **Day 15 ANTANANARIVO - PARIS - LONDON HEATHROW**

	AF0935	Economy	Dep: Antananarivo 01:40	Arr: Paris 11:25
	AF1780	Economy	Dep: Paris 13:25	Arr: London Heathrow 13:45

Arrive back into London Heathrow via Paris.

Holiday Cost

From £2,190.00 per person

20% deposit is required to secure a booking

Includes

- International flights as listed.
- All pre-payable airport departure taxes.
- Accommodation as listed.
- Transfers as listed.
- Meals as listed.
- Private driver with 4WD vehicle and fuel as listed.
- Entrance fees and local guides for national parks & private reserves as listed.

Excludes

- Local departure taxes where applicable.
- Tips and gratuities.
- Any future currency surcharges.
- Any future airline fare, tax or fuel surcharges.*

**In the event of airfare /tax increases you will have the option to pay for your airfare in advance to avoid these increases.*

Booking Conditions

- Usually a deposit of 20% is required to secure a booking.
- The final balance would be due 10 weeks prior to departure.
- Please contact us for our full booking conditions.

Quote Details

- The cost of this itinerary is based on two passengers sharing one room.
- All flights, accommodation and services are subject to availability at the time of booking.
- Air fares, taxes, schedules and routings are subject to change until ticket issue.
- Please be aware the standard of accommodation, service and food in Madagascar can be significantly lower than in other destinations in the Indian Ocean.

Financial & Consumer Protection

- When you book with Distinctive World Travel you are safe in the knowledge that we are fully bonded with the Civil Aviation Authority and hold an Air Tour Operators Licence (ATOL 9027).

www.caa.co.uk/ATOL9027

- We are a member of AITO (Association of Independent Tour Operators) which represents the UK's 120 top specialist tour operators and prides itself on providing the highest level of customer satisfaction by concentrating on: Choice, Quality and Service.

www.aito.co.uk

For more information or to discuss this quote please contact us on:

t: 01242 890 597

e: sales@distinctiveafrica.co.uk

www.distinctiveafrica.co.uk