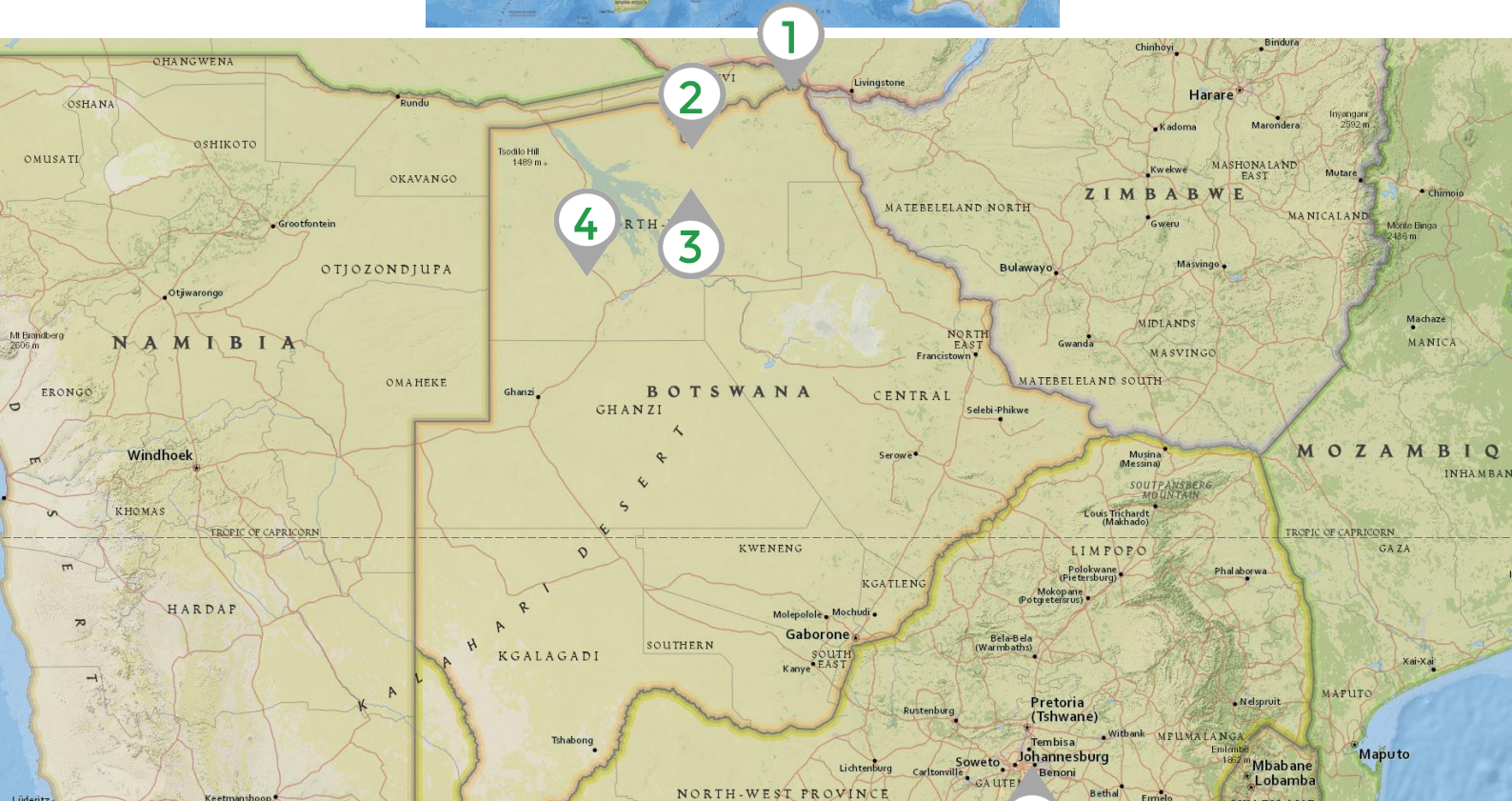
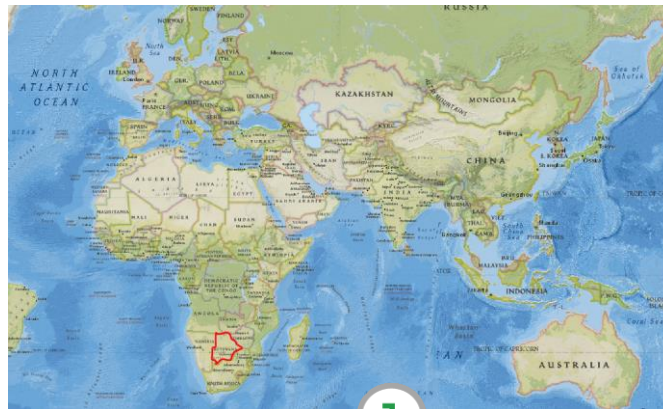


DISTINCTIVE
AFRICA



DISTINCTIVE
BOTSWANA

No.	Date	Location	Details	Meals	Hotel	Nts
	Day 01	OVERNIGHT FLIGHT	Depart Heathrow with British Airways	-	Overnight Flight	1
1	Day 02	KASANE	Arrive into Johannesburg and FLYt to Kasane. 9-night Tented Safari - Letaka Tented Camp	BD	Kubu Lodge	1
2	Day 03	SAVUTI	Travel to Savuti including boat cruise and game drive en-route	BLD	Chobe National Park	3
	Day 04		Game drives in the area	BLD		
	Day 05		Game drives in the area	BLD		
3	Day 06	KHAWI	Travel to Khawi, game drives en-route	BLD	Khwai Community Area	3
	Day 07		Game drives in the area	BLD		
	Day 08		Game drives in the area	BLD		
4	Day 09	OKAVANGO DELTA	Travel the Okavango Delta, game drives en-route	BLD	Moremi Game Reserve	3
	Day 10		Game drives in the area	BLD		
	Day 11		Game drives in the area	BLD		
	Day 12	DEPART	Early morning game drive to the airstrip fly to Maun meet your return flights	B	-	-
	Day 13	UK	Arrive back into the UK.	-	-	-





Day 01 LONDON HEATHROW - JOHANNESBURG

Depart from the UK for your international flights to Johannesburg with British Airways.



BA057 Economy Dep: London Heathrow 21:20

Arr: Johannesburg 09:05 (Day 02)



Day 02 UK - JOHANNESBURG - KASANE

Continue through Johannesburg and meet your connecting flight to Kasane with South Africa Airlines.

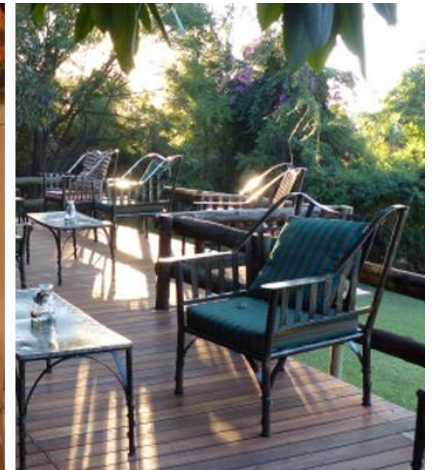
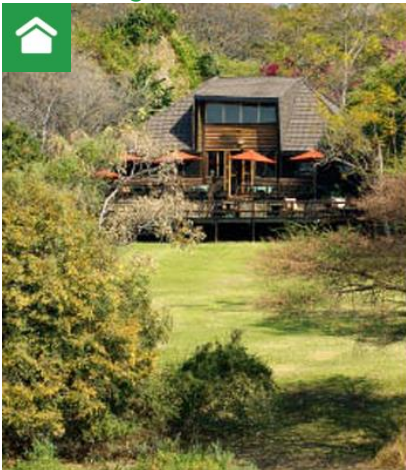


SA8306 Economy Dep: Johannesburg 11:45

Arr: Kasane 13:25

You will be met on arrival and then assisted to the transfer to your hotel.

Kubu Lodge



1 x Standard Room on a Dinner Bed & Breakfast basis for 1-night

Kubu Lodge is a small privately owned and run Lodge. The 11 Thatched, raised, chalets are set out beneath giant ebony and wild fig trees on a shaded lawn that extend to the river's edge. The wooden chalets, each with a deck, are fully serviced and tastefully furnished (mosquito nets, tea/coffee facility, safe, shower with hot and cold running water, hairdryer and electric shave plug point) giving you the comfort of home.





Day 03 KASANE – CHOBE NATIONAL PARK – SAVUTI

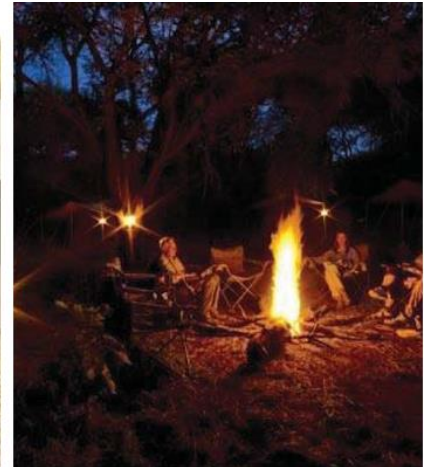
Your 9-night safari will start in Kasane at 09:00 where your guide will collect you directly from your hotel before you are taken for a morning boat cruise across the Chobe River. After the cruise you will continue on through Chobe National park to your first camp in Savuti, which will be your home for the next 3-nights.



The habitat on today's drive takes you from the Chobe River through the wonderful Zambezi teak woodlands of the Chobe Forest Reserve, across the sand-ridge and into the stunted mopane scrub of the Goha clay basin. Roan and sable antelope thrive in the teak woodlands where the low density of predators and lack of competition for food by other ungulates makes this prime habitat. The Goha region has natural waterholes that hold water well into the dry season and herds of buffalo, Burchell's zebra, greater kudu and elephant come down to drink.

Northern Highlights Tented Mobile Safari Information

Letaka Tented Camp



1 x Tent on a Fully Inclusive* & Shared Safari Activities Basis for 9-nights

The spacious and comfortable tents are fully equipped with full size beds, bed linen, towels and a private en-suite bathroom (with African bucket showers and long drop sand toilette). Your tents will move with you as you move between private campsites within the national parks and reserves.



Please Note:

Includes: *Game drives and local transfers in customised safari vehicles, all entrances and camping fees within national parks and reserves, All meals and drinks (mineral water, soft drinks, beer, wine and G&T), All activities as specified in the itinerary.

Excludes: travel insurance, items of a personal nature, toiletries and tips.

Itinerary Outline:

3 Nights Letaka Tented Camp - Chobe National Park. Activity guide: Game drives (Savuti and/or Zwe Zwe)

3 Nights Letaka Tented Camp - Khwai Community Area Activity guide: Game drives, night drives, guided walks and mokoro excursion

3 Nights Letaka Tented Camp - Moremi Game Reserve. Activity guide: Game drives

Highlights:

Chobe National Park (Savuti & Chobe River Front)

Boat cruise on the Chobe River

The freedom of the Khwai Concession Area

The Moremi Game Reserve

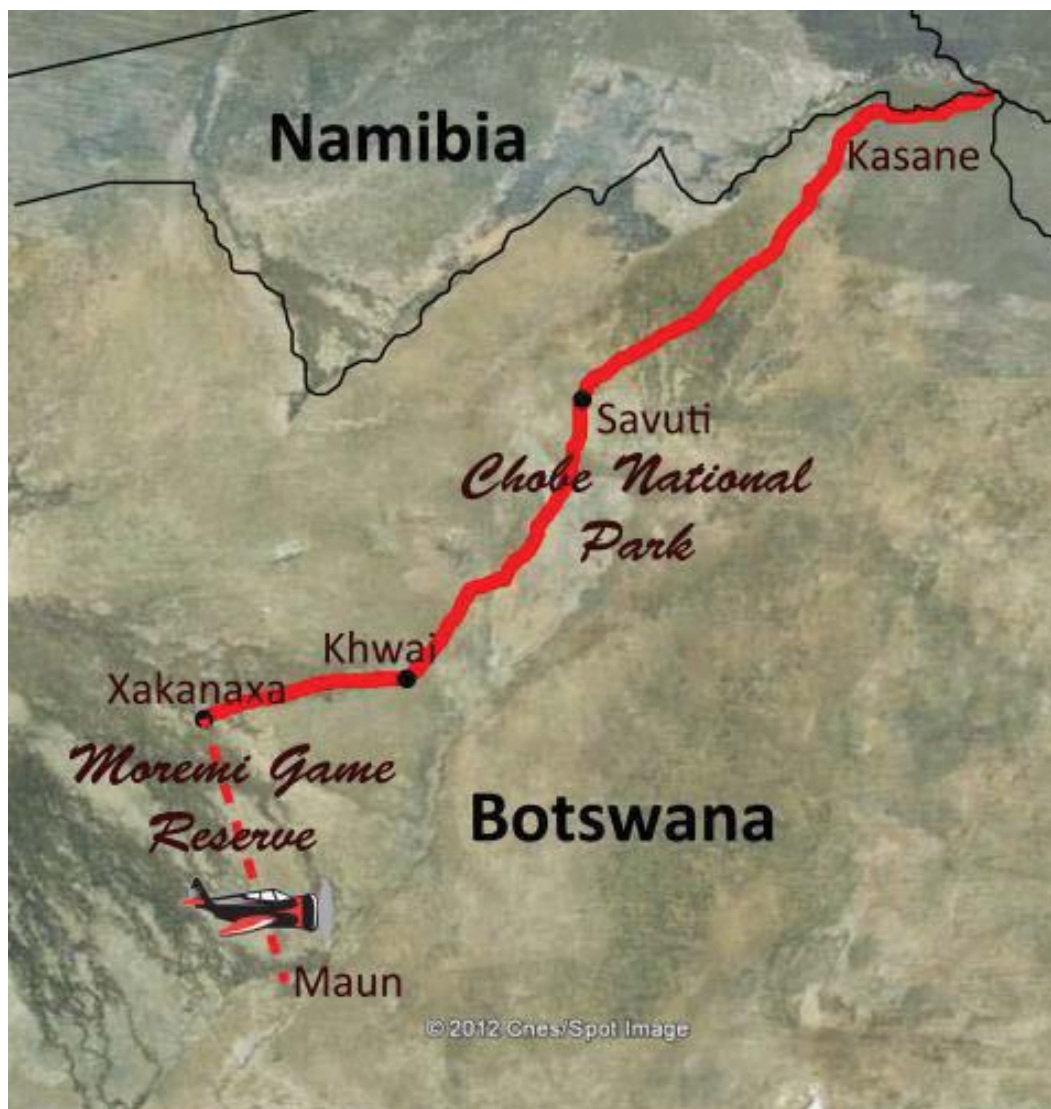
Exploring the Okavango Delta by Mokoro

Light aircraft flight over the Okavango Delta



Please Note:

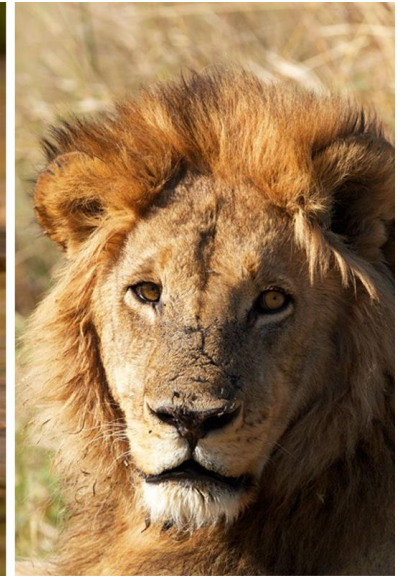
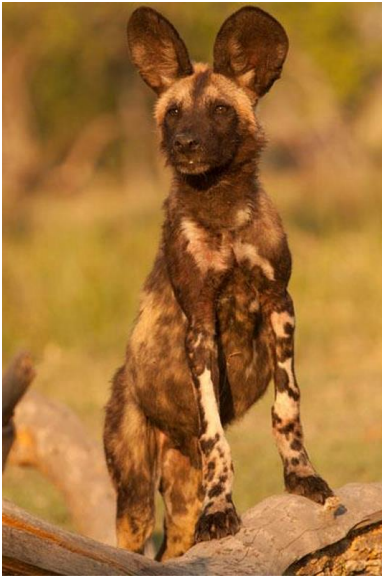
Although every effort is made to adhere to schedules and itineraries, these are subject to change subject to weather (specifically with current flood conditions, the driving times may differ between the areas quite considerably depending upon the time of year), roads, and animal movements and availability. You will be notified of any changes.





Days 04 - 05

SAVUTI



For the next two days you will be able to enjoy game drives and walks to nearby bushman cave paintings. Unlike the vast majority of the country, Savuti is not flat landscape. Large outcrops of volcanic rock reach up out of the Kalahari sands, towering over the endless savannah. These hills provide habitat for a completely different array of small wildlife, birds and plants. The Savuti Marsh has been the stage for many of the most dramatic wildlife documentaries in Africa. The wide open country, good ungulate populations and particularly strong prides of lion and hyaena clans make for dramatic wildlife interaction and excellent viewing opportunities. The now dry Savuti Channel runs through this landscape linking the the waterholes, the hills and the grassland that was the Savuti Marsh. Undoubtedly it is the interaction between lion and elephant that is the most interesting aspect of Savuti. The area is inhabited by a huge pride of lions with numbers fluctuating from 20-30 members. These remarkable lion have learned over the years how to hunt these massive pachyderms that are supposedly above predation. Launching their attack under darkness and using their numbers, they manage to kill adolescent and even young adult elephant. The marsh is prime cheetah country and in the wet season it is not unusual to have the wild dog hunting here in Savuti.





Day 06 SAVUTI - KHAWI

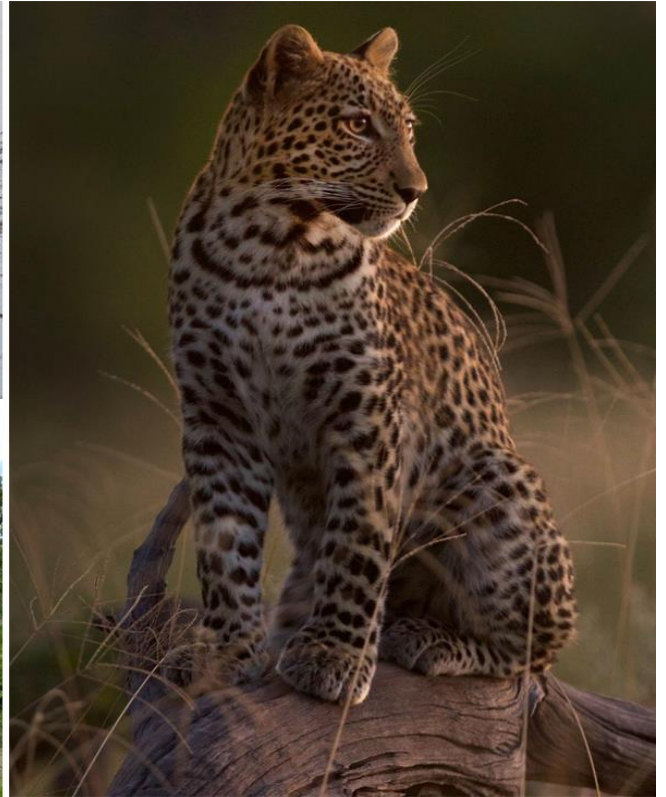


Leaving the parched landscape, continue your journey south to the Khwai Community Area. A fascinating days drive looking at some of the evidence of the Paleo-Lake Makgadikgadi that dried up some ten thousand years ago. The most challenging part of the trip is crossing the Magwike Sand-ridge that formed the shoreline of this massive inland sea. The winding track through this deep sand makes for interesting travel in the early summer! The old lake bed is now the Mababe Depression. The dense clay floor of the depression results in high protein feed for wildlife and the area teems with game after the rains. During the rainy season the depression is impassable due to the "cotton soil" and alternative routes must be used. The range of habitat that is covered encompasses most of the habitat types of northern Botswana. Pass through excellent lion country and some of the best cheetah country that our safari will cover. Elephant occur throughout the drive but are more common at the start and end of the drive where permanent surface water can be found.





Days 07 - 08 KHAWI



The Khwai River forms a boundary between the reserve and the community area. Spend the following two nights camping at an exclusive campsite in the community area, exploring the Khwai floodplains on game drives both during the day and at night. Exploring after dark with spotlights offers you an opportunity to experience some of the nocturnal animals that are rarely encountered during the day. You will also have the opportunity to explore the surrounding wilderness on foot and mokoro and enjoy an up close and personal encounter with Botswana's flora and fauna. It is important to note that night drives and guided walks are not permitted within the national parks and reserves. These activities are conducted outside the boundaries of the Moremi Game Reserve in the Khwai community area. Spend the time between the dry-land habitats of the lead-wood and camel-thorn woodlands and savannahs and the riverside and marshy back-waters of the Khwai. Time permitting you may visit the lagoons and waterways of Xakanaxa where the largest heronry in southern Africa exists. The Khwai region boasts excellent populations of both bull elephant as well as breeding herds. Lion, leopard, serval and African wildcat are common predators of the region with wild dog and cheetah being less common. Buffalo use this area seasonally with large herds moving in during the summer rains. The swampy areas in the west are home to red lechwe. Other ungulates include tsessebe, blue wildebeest, giraffe, kudu, sable antelope, roan antelope and impala.





Day 09 KHAWI - OKAVANGO DELTA (MOREMI)



The Manuchira Channel is known as the Khwai River at its eastern most extremity. The day's journey follows this water course, with the track weaving from the riverside and floodplains into the mopane veld and the woodlands that make Khwai one of the most scenic areas of the Okavango. Pass the magnificent Dombo Hippo Pools in the morning stopping to enjoy the scenery and the antics of the resident hippo. The western mopane veld is home to mostly breeding herds of elephant whilst the eastern reaches of Khwai is home to some impressive old bulls. The mature bulls revel in the cool waters of the Khwai and are far more approachable while drinking and bathing than the breeding herds. The river has an unusually high density of hippo as well as some huge crocodile. Leopard, cheetah, serval and lion are common predators along this route and both Xakanaxa as well as Khwai are included in the home ranges of 2 different packs of wild dog. General game includes southern giraffe, Burchell's zebra, tsessebe and red lechwe with roan and sable antelope being less common residents.





Days 10 - 11

OKAVANGO DELTA (MOREMI)



For the next two days, from your base in Xakanaxa you will explore the Moremi Game Reserve. Moremi lies on the eastern edge of the Okavango Delta. Habitats here range from wide-open floodplains, marshes, lagoons, papyrus fringed channels, vast reed-beds of *Miscanthus* and *Phragmites*, woodland and savannah. As a result of the extremely variable habitat the diversity of both wildlife and birdlife is excellent. Every type of mopane habitat is well represented in this drive from the towering cathedral woodlands Xakanaxa to the classic climax mopane woodland and in the drier and harsher habitats, extensive stretches of scrub mopane. The San-ta-Wani region has scattered ephemeral water pans with large floodplains and camel-thorn woodlands. 40 km of the drive is in Moremi Game Reserve with a further 40 km in areas designated for wildlife management where animals roam freely to and from the Game Reserve.





Day 12 OKAVANGO DELTA (MOREMI) – MAUN – JOHANNESBURG – UK

Following breakfast and an early morning game drive, you will be taken to the airstrip for your charter flight back to Maun at approximately 12:30.



Charter Flight Economy Dep: Xakanaxa 12:30 Arr: Maun 12:50

On arrival check in for your return flights to Johannesburg with South African Airways.



SA8301 Economy Dep: Maun 14:00 Arr: Johannesburg 15:40

Continue through Johannesburg for your connecting flight on to the UK with British Airways.



BA056 Economy Dep: Johannesburg 19:20 Arr: London Heathrow 05:25 (Day 13)



Day 13 LONDON HEATHROW

Arrive back into London Heathrow.

Holiday Cost

from £5,140.00 per person

20% deposit is required to secure this booking

Suggested Itinerary

- This is just a suggested itinerary which we can amend to fit your exact requirements.

Includes

- International flights as listed.
- All pre-payable airport departure taxes.
- Internal flights as listed in economy class.
- Accommodation as listed.
- Transfers as listed (on a shared basis unless specified as private).
- Meals as listed.
- Government taxes and park fees.
- Excursions as listed (on a shared basis unless specified as private).

Excludes

- Local departure taxes where applicable.
- Tips and gratuities.
- Any future currency surcharges.
- Any future airline fare, tax or fuel surcharges.*

**In the event of airfare /tax increases you will have the option to pay for your airfare in advance to avoid these increases.*

Booking Conditions

- 20% deposit is required to secure this booking.
- The final balance would be due 10 weeks prior to departure.
- Please contact us for our full booking conditions.

Quote Details

- All flights, accommodation and services are subject to availability at the time of booking.
- Air fares, taxes, schedules and routings are subject to change until ticket issue.
- This quote is based on 2 passengers in 1 X room.

Passenger Information

- Please ensure that passenger names are exactly as per passport.
- Please provide full passport details on confirmation of booking.
- It may be a requirement that you have a valid Yellow Fever certificate to enter into Botswana, please check with your Distinctive representative at least 4 weeks prior to travel.
- If you are taking any light aircraft flights, your personal belongings must be in soft sided luggage and a maximum of 15 KG's, hard cases will not fit into the hold of the light aircrafts.

Financial & Consumer Protection

- When you book with Distinctive World Travel you are safe in the knowledge that we are fully bonded with the Civil Aviation Authority and hold an Air Tour Operators Licence (ATOL 9027).

www.caa.co.uk/ATOL 9027

- We are a member of AITO (Association of Independent Tour Operators) which represents the UK's 120 top specialist tour operators and prides itself on providing the highest level of customer satisfaction by concentrating on: Choice, Quality and Service. www.aito.co.uk

For more information or to discuss this quote please contact us on:

t: 01242 890 597

e: sales@distinctiveafrica.co.uk

www.distinctiveafrica.co.uk