

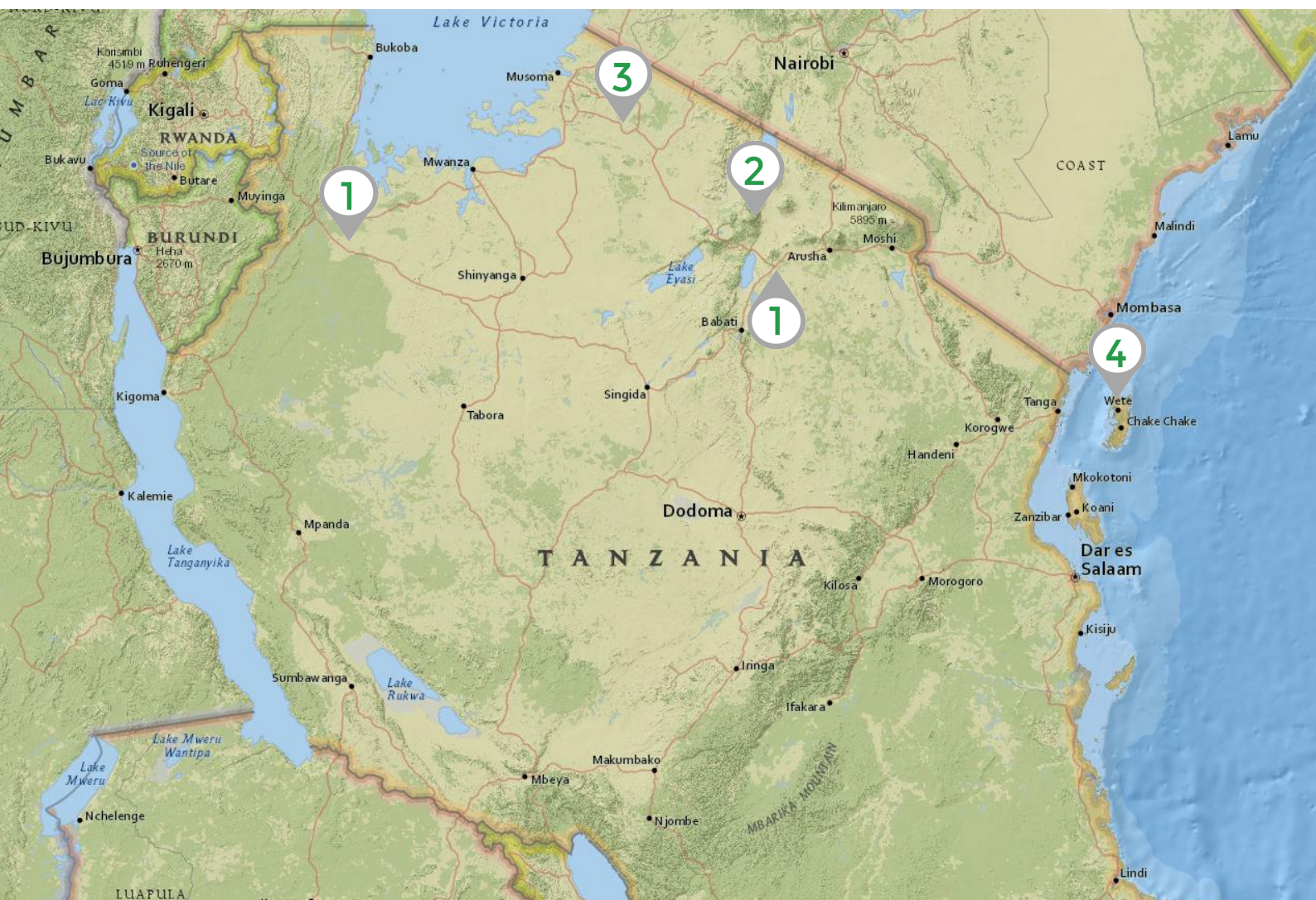
A tropical beach scene at sunset. The sun is low on the horizon, casting a warm orange glow over the ocean and sky. In the foreground, a hammock is strung between two trees, its netting and tassels visible. The beach is sandy and calm, with gentle waves lapping at the shore. The top right corner features a small white map of Africa.

DISTINCTIVE
AFRICA

CLASSIC

TANZANIA & ZANZIBAR

| No. | Date | Location | Details | Meals | Hotel | Nts |
|----------|--------|--------------------------|--|-------|-----------------------|-----|
| | Day 01 | OVERNIGHT FLIGHT | Depart Heathrow with Qatar Airways | - | Overnight Flight | 1 |
| 1 | Day 02 | TARANGIRE | Arrive into Doha, fly to Kilimanjaro. Road transfer to Tarangire National Park | D | Tarangire River Camp | 2 |
| | Day 03 | | Game drives from you Camp. | BLD | | |
| 2 | Day 04 | NGORONGORO CRATER | Transfer to Ngorongoro Crater with an excursion to Lake Manyara & picnic lunch en-route. | BLD | Ngorongoro Farm House | 2 |
| | Day 05 | | Full day Ngorongoro Crater tour | BLD | | |
| 3 | Day 06 | SERENGETI | Transfer to Serengeti National Park | BLD | Kati Kati Camp | 3 |
| | Day 07 | | Morning and afternoon game drives | BLD | | |
| | Day 08 | | Morning and afternoon game drives | BLD | | |
| 4 | Day 09 | PEMBA ISLAND | Fly to Pemba Island | BLD | Manta Resort | 4 |
| | Day 10 | | Day at leisure | BLD | | |
| | Day 11 | | Day at leisure | BLD | | |
| | Day 12 | | Day at leisure | BLD | | |
| | Day 13 | DEPART | Fly to Zanzibar meet Qatar flights to the UK | B | - | - |
| | Day 14 | UK | Arrive back into the UK | - | - | - |





Day 01 LONDON HEATHROW - OVERNIGHT FLIGHT

Depart Heathrow flying with Qatar.



QR0016 Economy Dep: Heathrow 21:55

Arr: Doha 06:50(Day 02)



Day 02 DOHA - KILIMANJARO - TARANGIRE



QR1357 Economy Dep: Doha 08:50

Arr: Kilimanjaro 16:40

On arrival you will be met and driven to Tarangire where your first Safari Camp is located.

Tarangire River Camp



1 x Standard Tent on a Full Board basis for 2-nights

Tarangire River Camp, set within 25,000 hectares of concession area, the camp is just 3.5 km from the main entrance to Tarangire National Park, accommodating guests in 20 luxury safari tents, which are en-suite with hot and cold running water. The tents are tastefully furnished with all the comforts you will need whilst on safari and open out onto stunning views of Mount Meru and Mount Kilimanjaro. Meals are a delicious affair, dinners are served by candlelight in the thatch and timber elevated dining area, with dramatic views across the Masai plains, where a friendly and attentive staff are always on hand to cater to your every need. Activities from Tarangire River Camp include game drives, guided walking safaris, birding watching on the shores of Lake Manyara, and cultural safaris visiting the Masai and Datoga peoples whose bomas populate adjacent land.





Day 03 TARANGIRE

Enjoy morning and afternoon game drives from your lodge.



Covering 2,600km², Tarangire abounds with a wonderful diversity of game and is dominated by numerous wide-boughed baobab trees that create a lasting impression on all its visitors. The park is at its finest during the dry seasons, from between June to October and December to March. This is when the Tarangire River and the various swamps attract the highest concentrations of game, providing a lifeline to thousands of species. This area is best for oryx, kudu, wildebeest, zebra, elephant, buffalo and eland but leopards, hyena and massive pythons are also found here. Strategically located south of Lake Manyara and just over 100km from Arusha, this is a delightful, untamed gem of a park.





Day 04 TARANGIRE - LAKE MANYARA - NGORONGORO CRATER

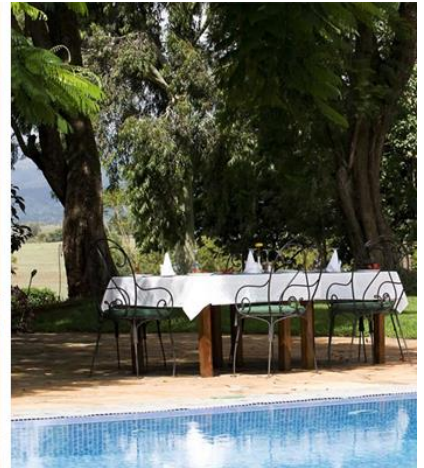
After breakfast at Tarangire River Camp you will be driven to Lake Manyara with picnic lunch and a game drive en-route.



A picturesque park of forest, acacia woodland and open grassland, Lake Manyara covers a narrow section of land between the soda lake itself and the steep Rift Valley walls. Famous for its tree climbing lions the park also boasts good leopard spotting and over 400 species of bird. In the Simba River find hippos, on the open plains there is a resident herd of Cape buffalo and in the forests numerous elephant. The host flamingos, herons and yellow billed storks will impress even the most reluctant of birdwatchers!

After exploring Lake Manyara you will be transferred on to your next lodge.

Ngorongoro Farm House



1 x Standard Room on a Full Board Basis for 2-nights

Ngorongoro Farm House is a small and exclusive lodge facing the Oldeani Volcano, about a ten minute drive from the entrance to the Ngorongoro Crater. There are 30 cottages built on the style of an old Colonial Farm offering a relaxed and colonial atmosphere. The main building, covered with a thatch roof, has a reception, bar, dining area, library and lounge with fireplace. There is also a delightful swimming pool.

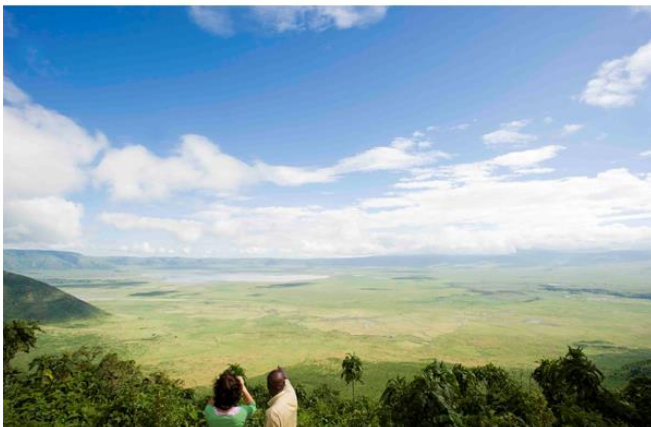
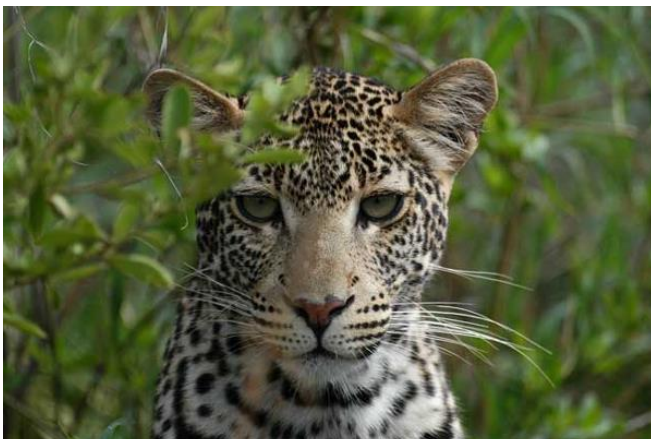


Day 05 NGORONGORO CRATER



Full day Ngorongoro Crater tour (including picnic lunch)

Nearly three million years old, the ancient caldera of the once-volcanic Ngorongoro shelters one of the most beautiful wildlife havens on earth, ringed with towering walls and sheltering forests, grasslands, fresh springs and a large soda lake. In the Ngorongoro Conservation Area, 42 000 Maasai live and herd their livestock in harmony with Africa's wild animals. You will descend 610 metres to the crater floor to explore what has been called the 8th wonder of the world. Famous for its rich wildlife, the Ngorongoro Crater is a truly special place. After your tour you will visit a traditional Masai village before returning to your lodge.





Day 06 NGORONGORO CRATER - SERENGETI

Enjoy breakfast before driving to Serengeti, and your next lodge.

Serengeti Kati Kati Camp



1 x Standard Tent on a Full Board Basis for 3-nights

A mobile tented camp, strategically located depending on the time of the year, to cover the vast Serengeti Plains. The camp offers comfortable accommodation and a unique opportunity to enjoy a real safari camp experience. The camp is only a two hour scenic drive from Olduvai Gorge Museum and Grumeti River. A cosy mess tent is located in the centre of the camp where meals are served. The campfire is ready every evening for appetizers and snacks before dinner. There are 15 tents, each with a large king size bed or two twin beds and each tent has a shower, hand basin and flush toilet.





Days 07 - 08 SERENGETI

Morning and afternoon game drives in Serengeti National Park.



With more than two million wildebeest, half a million Thomson's Gazelle and a quarter of a million zebra, the Serengeti National Park is one of the world's premier wildlife reserves. A landscape of small rivers, lakes, swamps and grassy savannah, it lives up to its traditional meaning; 'the endless plains that go up to the sky'. These short grass plains provide an exceptional landscape for wildlife viewing all year round. However, it is a dynamic landscape and each year the Serengeti hosts the largest and longest overland migration of animals in the world as several million hooves trek in search of succulent grazing pastures. After the short rains around November, wildebeest, zebra, gazelle, eland, topi and hartebeest gather on the Serengeti's southern plains and the Ngorongoro Highlands. Then around April, after the young have been born and as the plains of the south and east dry out, they head towards the Western Corridor of the Serengeti before overflowing into the Masai Mara in July and August. They remain here until late October / November when Tanzania's rains prompt a move south again. The migration is truly one of the wonders of the animal world; a spectacle full of drama watched over by lions, hyenas and crocodiles all looking for an easy meal!







Day 09 SERENGETI – ZANZIBAR – PEMBA ISLAND

Transfer to the airport to meet your onward flight to Zanzibar.



| | | |
|-----|---------|--------------------|
| TBA | Economy | Dep: Serengeti TBA |
| TBA | Economy | Dep: Zanzibar TBA |

| |
|-------------------|
| Arr: Zanzibar TBA |
| Arr: Pemba TBA |

On arrival you will be met and transferred to your hotel.

Manta Resort



1 x Superior Garden Room on an All-Inclusive Basis for 4-nights

Manta resort, on Pemba Island, is located on one of the best stretches of coast in the Indian Ocean with a fine white coral sand beach and palm trees – a true undiscovered paradise. With less than 20 rooms and no other hotels in sight you will feel like you have the place to yourself. The superior garden rooms and sea front villas come equipped with air-conditioning, a king size four poster bed and private covered terrace. Delicious meals are served on the veranda overlooking the ocean, offering spectacular sunsets. There is a large swimming pool that overlooks the sea and a beach bar which is the perfect place to enjoy a cocktail while the sun goes down. There are plenty of land based activities on offer as well as a PADI dive centre to enjoy the Pemba channel - some of the best diving in Africa. Manta is not lavish luxury, you will want for nothing staying here but you won't have a satellite tv and silk curtains, if you can for-go these pleasures then you will discover an untouched and, as yet, undiscovered paradise.



Please Note:

The all-inclusive basis excludes champagne and premium brands although does include cocktails.







Days 10 - 12

PEMBA ISLAND



Explore our remote and fascinating island with the various tours and excursions on offer. Arranged at the resort to suit you and your personal interests, they range from walks to local villagers to guided tours through the ancient Ngezi Forest to searching for the endemic Pemba Flying Fox.

Pemba lies to the north of Zanzibar, about 20 minutes by air and 80km by sea. It is more undulating and densely vegetated than Zanzibar with natural forest and plantations and was often referred to by early Arab sailors as El Hethera, 'the green'. With cloves being the main crop grown here, tourism and fishing have become specialities. The beaches are stunning, vast and empty and an 800m deep channel splits Pemba Island from the continent, making this one of Africa's greatest deep-sea fishing and diving destinations. On the island itself, walking excursions through forests are very worthwhile, revealing many native species including spectacular ferns and giant trees. There are also cycle-rides, dhow trips, many archaeological sites to explore and afterwards fresh lobster, fish and other tropical and spicy delicacies to enjoy.





Day 13 PEMBA ISLAND - ZANZIBAR - DOHA - OVERNIGHT FLIGHT

Transfer to the airport to meet a light aircraft flight to Zanzibar



TBA Economy Dep: Zanzibar 13:30 Arr: Doha 14:05

Transfer to the airport to meet your return flights with Qatar.



QR1355 Economy Dep: Zanzibar 17:20 Arr: Doha 22:35



Day 14 DOHA - LONDON HEATHROW



QR009 Economy Dep: Doha 01:40 Arr: Heathrow 06:20

Arrive back into the UK.

Holiday Cost

from £4,630.00 per person

20% deposit is required to secure this booking

Suggested Itinerary

- This is just a suggested itinerary which we can amend to fit your exact requirements.

Includes

- International flights as listed.
- Internal flights as listed.
- All pre-payable airport departure taxes.
- Accommodation as listed.
- Transfers as listed.
- Meals as listed.
- Activities as listed.

Excludes

- Local departure taxes, park fee increases and VAT increases where applicable.
- Tips and gratuities.
- Any future currency surcharges.
- Visa entry fees, it is recommended that you arrange your visas in advance of visiting Tanzania. You can do this by visiting www.tanzania-online.gov.uk
- Any future airline fare, tax or fuel surcharges.*

**In the event of airfare /tax increases you will have the option to pay for your airfare in advance to avoid these increases.*

Booking Conditions

- 20% deposit is usually required to secure this booking.
- The final balance would be due 10 weeks prior to departure.
- Please contact us for our full booking conditions.

Quote Details

- All flights, accommodation and services are subject to availability at the time of booking.
- Air fares, taxes, schedules and routings are subject to change until ticket issue.
- This quote is based on 2 passengers in 1 X double room.

Passenger Information

- Please ensure that passenger names are exactly as per passport.
- It may be a requirement that you have a valid Yellow Fever certificate to enter into Tanzania, please check with your Distinctive representative at least 4 weeks prior to travel.
- If you are taking any light aircraft flights, your personal belongings must be in soft sided luggage and be a maximum weight of 15 KG's, hard cases will not fit into the hold of the light aircrafts.

Financial & Consumer Protection

- When you book with Distinctive World Travel you are safe in the knowledge that we are fully bonded with the Civil Aviation Authority and hold an Air Tour Operators Licence (ATOL 9027).

www.caa.co.uk/ATOL 9027

- We are a member of AITO (Association of Independent Tour Operators) which represents the UK's 120 top specialist tour operators and prides itself on providing the highest level of customer satisfaction by concentrating on: Choice, Quality and Service.

www.aito.co.uk

For more information or to discuss this quote please contact us on:

t: 01242 890 597

e: sales@distinctiveafrica.co.uk

www.distinctiveafrica.co.uk