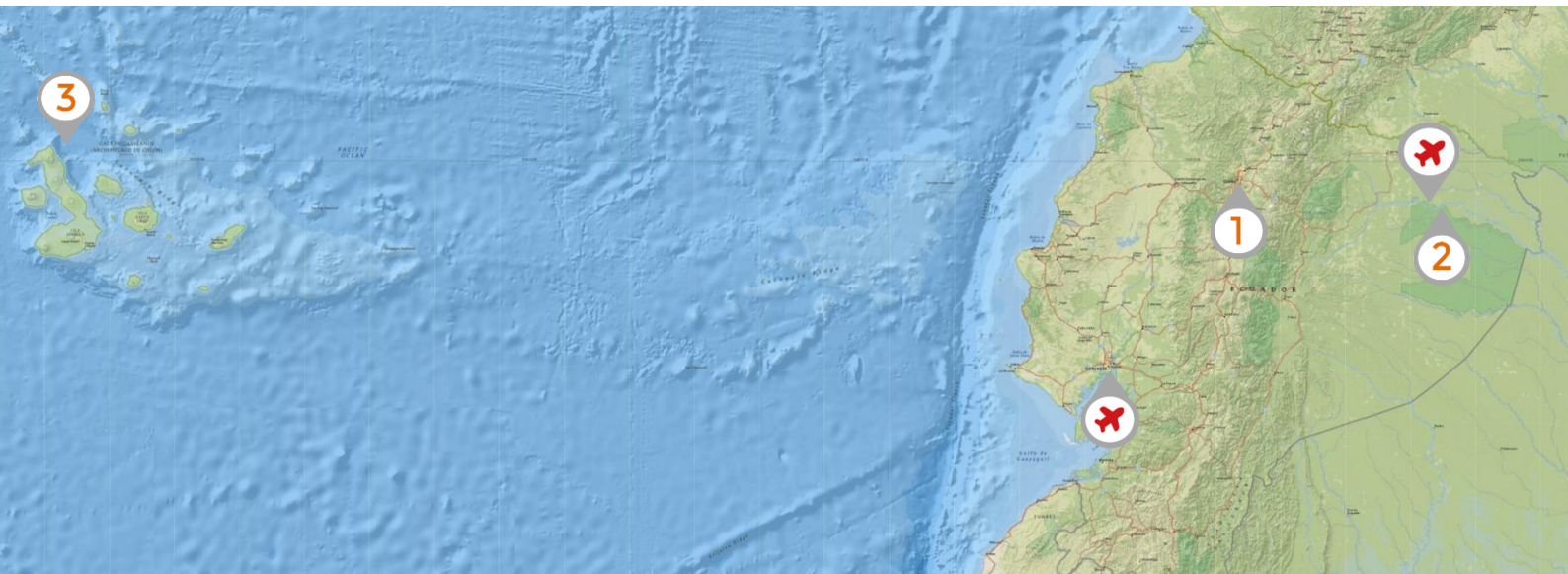


DISTINCTIVE  
AMERICAS



CLASSIC  
ECUADOR &  
GALÁPAGOS





NO.	DATE	LOCATION	DETAILS	MEALS	HOTEL	NTS
1	Day 01	QUITO	Arrive into Quito & transfer to your hotel	-	La Casona de la Ronda	2
	Day 02		Half day city tour	B		
2	Day 03	AMAZON	Fly to Coca and transfer to your lodge	BLD	Sacha Lodge	3
	Day 04		Enjoy complimentary activities from your lodge	BLD		
	Day 05		Enjoy complimentary activities from your lodge	BLD		
1	Day 06	QUITO	Transfer to Coca and fly to Quito	B	La Casona de la Ronda	1
3	Day 07	GALÁPAGOS	Fly to Galápagos and board your cruise boat	BD	M/Y Beluga	7
	Day 08		Afternoon excursion to Santa Cruz			
	Day 09		Full day excursion to Floreana Island	BLD		
	Day 10		Morning & afternoon excursion to Isabela Island	BLD		
	Day 11		Morning & afternoon excursion to Isabela Island	BLD		
	Day 12		Morning excursion to Fernandina Island	BLD		
	Day 13		Afternoon excursion to Isabela Island			
	Day 14		Morning excursion to Santiago Island	BLD		
	Day 15		Afternoon excursion to Bartolome Island			
	Day 14	DEPART	Fly to Guayaquil & meet your KLM return flight	B	-	-
	Day 15	HOME	Arrive back in the UK	-	-	-



**Day 01 LONDON HEATHROW – AMSTERDAM - QUITO**

Depart flying with KLM.



KL1000 Economy Dep: Heathrow 06:30  
KL0751 Economy Dep: Amsterdam 10:00

Arr: Amsterdam 09:00  
Arr: Quito 14:40

Private transfer on arrival to your hotel.

**La Casona de la Ronda**



**1 x Standard Room on a Bed & Breakfast basis for 2-nights**

With an excellent location in the heart of the Old Town, La Casona de la Ronda is an 18<sup>th</sup> Century colonial style house recently converted into a lovely boutique hotel. The 22 rooms are arranged around a central courtyard and are bright and airy, with Wi-Fi internet & LCD TV, some have seating areas and city views. The interiors include wooden furnishing and parquet floors. Drinks from the bar and the coffee shop can be enjoyed in the garden and on the terrace.



**Day 02 QUITO**



**Private half day city tour including the Middle of the World Monument**

A UNESCO World Heritage site, Quito, the capital of Ecuador has retained much of its colonial past. Steep cobbled stone streets, ornate churches and fine plazas are all to be found in the old district of town. The modern new town is the business district and this is where you will find the best shopping and restaurants. The city was founded in 1534 and has a wonderful setting at the base of the Pichincha Volcano. In the distance the snow-capped peak of Cotopaxi and its surrounding national park dominates the horizon. The Equatorial Monument 25 km North of Quito, marks the exact Middle of the World, latitude 0°, where you can stand with a foot on each hemisphere. Visit the Ethnographic Museum inside the monument, which shows the great diversity of Ecuador's native groups. Beside the monument there is a colonial-style town, complete with main square, church, post office, bullring, cafeterias, restaurants and many gift shops that sell postcards and souvenirs.





### Day 03 QUITO – COCA - AMAZON

Private transfer to Quito Airport to board your onward flight to Coca.



EQ211 Economy Dep: Quito 10:30

Arr: Coca 11:10



**Please Note:**

For the flight to Coca, the airlines require that checked luggage be limited to a weight of 20 kgs per person. However, heavier items such as cameras and books may be taken in carry on bags if necessary.

As you fly east the mountain ranges give way to lowland primary rainforest. Viewed from the air, the landscape is a carpet of green with the occasional blue ribbon of water flowing through it. Covering much of Ecuador's eastern territory, the Amazon Rainforest is the world's most impressive jungle system.

On arrival you will be met and taken to a private dock where you will have a quick snack before boarding a covered boat for a two hour trip down the Napo River, the largest river in the Ecuadorian Amazon. During the boat ride away from civilisation it's easy to spot shore birds such as herons, kingfishers, spoonbills and ospreys, between the scattered native huts. Upon arrival at Sacha Lodge's 5000-acre private reserve, you will walk along a raised boardwalk through dense flooded palm forest where several species of monkeys are often seen. The path leads to Pilchicocha lake, where dugout canoes await to carry you even farther across the lake to the lodge. In the afternoon you can enjoy an introductory Rainforest tour.

#### Sacha Lodge



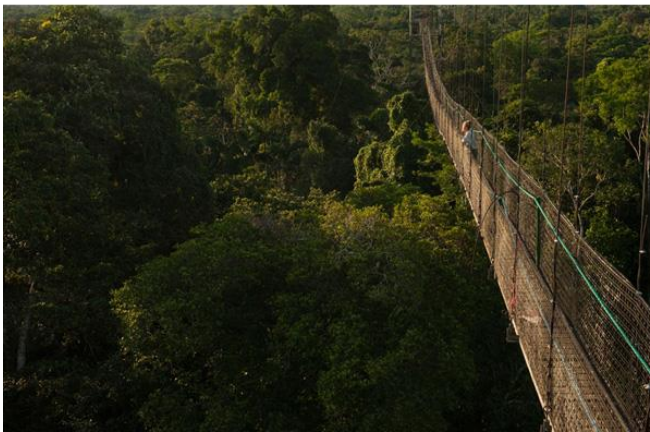
#### 1 x Standard Room with Full Board & Shared Activities for 3-nights

Sacha Lodge is set amongst a 5000 acre private reserve, deep in the Ecuadorian Amazon Rainforest. All of the lodge's 26 cabins and three family cabins have been constructed using traditional materials. The recently opened 940 foot long canopy walkway takes you right up close to, otherwise hard to spot, bird and animal life.





Days 04 - 05 AMAZON



### **Shared guided activities from Sacha Lodge**

A typical day at Sacha begins at sunrise or earlier, in order to take advantage of the cool morning hours when the rainforest's animals are most active. Each group may decide on its own wake-up and breakfast time, as well as the difficulty and duration of their morning outings. In the afternoon, visits begin at around 15:00 and often continue into the evening, when the nocturnal insect and frog chorus begins. Activities are spread out over a wide area and allow visitors to explore several distinct but equally fascinating habitats.

Trails lead through pristine forest, where 150ft kapok trees tower above and roots form huge buttresses to give trees support. Others follow strategically raised boardwalks in seasonally flooded forests, where walking on the ground would be nearly impossible during most of the year due to groundwater.

A favourite activity is to paddle dugout canoes along tannin-rich black-water creeks and lakes, where luxuriant lianas, orchids, bromeliads and palm trees thrive. And wherever an outing may lead the possibilities of spotting animals, from the tiny pygmy marmoset to the feared ocelot or puma are endless. During free time at the lodge, swimming and piranha fishing are also activities not to be missed. In the evening night walks and canoe trips are on offer with the aid of flashlights, which often reveal creatures seldom seen during daylight, such as Caimans (of the alligator family) and giant insects.





**Day 06** AMAZON – COCA – QUITO

Depart Sacha early in the morning by motorised canoe & road to Coca Airport to meet your flight to Quito.



EQ212 Economy Dep: Coca 13:00

Arr: Quito 13:40

Private transfer on arrival to your hotel.



**La Casona de la Ronda**

1 x Standard Room on a Bed & Breakfast basis for 2-nights



**Day 07** QUITO - BALTRA ISLAND – SANTA CRUZ

Private transfer to the airport for your onward flight with Avianca.



AV1632 Economy Dep: Quito 06:50

Arr: Baltra 09:20



**Luggage restrictions:**

One piece of checked luggage (20kg max) per person and 1 carry-on (7kg max) per person.



**Please Note:**

Flight numbers and times are subject to change.  
There will be a touch down in Guayaquil en-route.

Shared transfer on arrival to your Galápagos vessel. Once on board you will be given a safety brief and time to explore and settle in before lunch and an afternoon excursion.



**M/Y Beluga**

Information on your boat is found on page 7 – 8 of this quote.

The itinerary continues on page 9 of this quote.



**Shared afternoon excursion to Highlands of Santa Cruz and the Charles Darwin Station**

This afternoon you will take a bus up into the highlands of Santa Cruz island. Here you can witness Galápagos giant tortoises in the wild. After exploring you will take the bus back down into the town. Here you will have the opportunity to witness the fantastic work that is carried out to learn about and protect the unique animals and eco-systems of these islands at the Charles Darwin Station.

## Your Galápagos Vessel

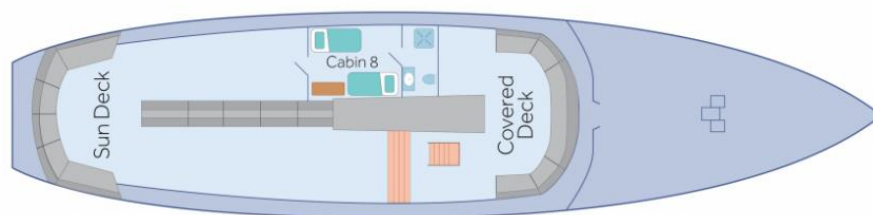
### M/Y Beluga



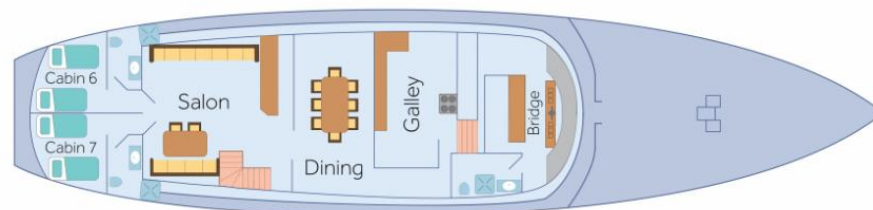
### 1 x Standard Cabin on a Full Board & Activities basis for 7-nights

Re-built in 1994 the Beluga is a popular first class motor vessel which offers week long expeditions departing on Fridays. The 110 foot, fully air-conditioned vessel accommodates 16 passengers in double staterooms, each with private bathroom and shower. The Beluga is spacious and comfortable with plenty of deck space, and the friendly experienced crew of 7 help retain a relaxed atmosphere both on aboard and ashore.

### UPPER DECK



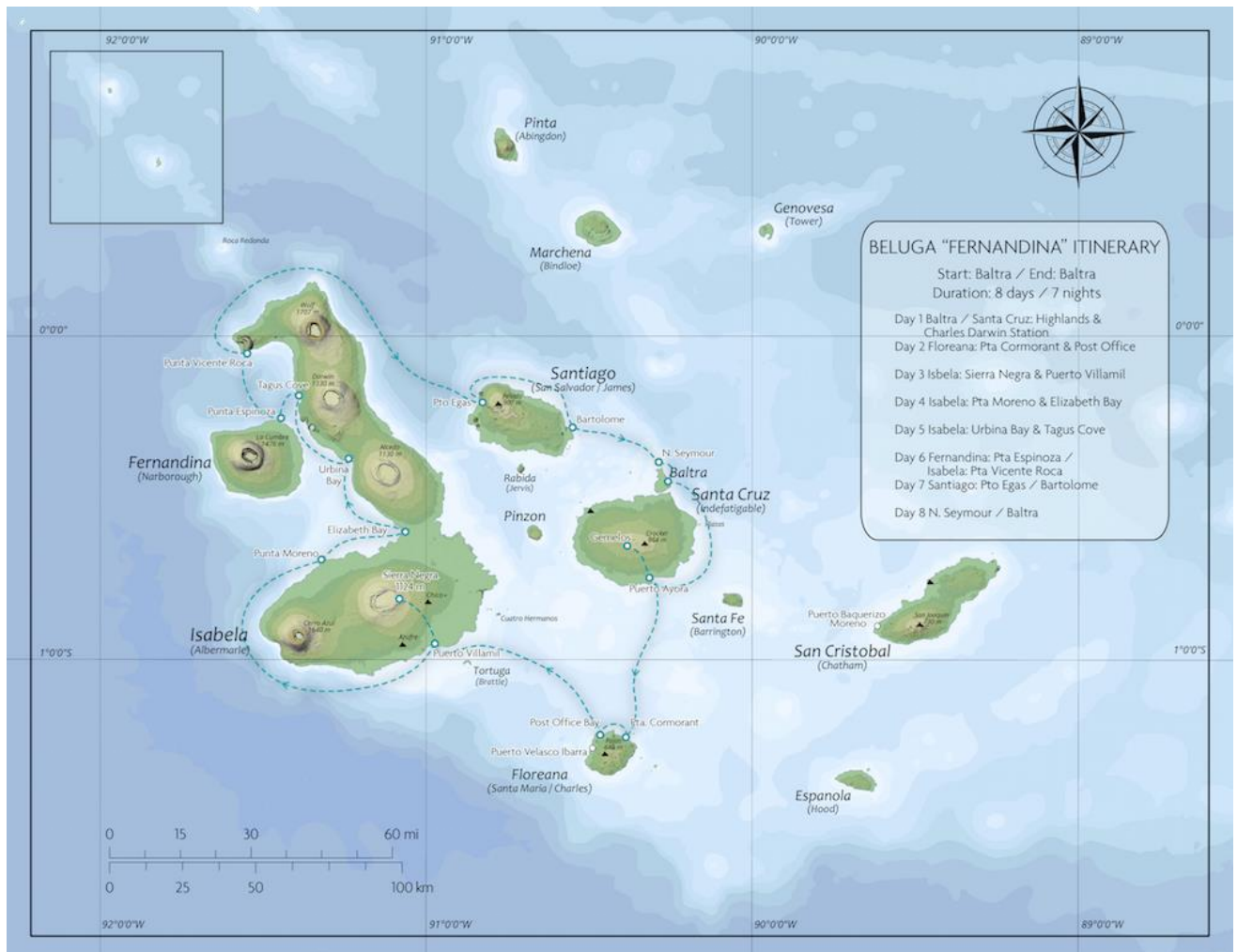
### MAIN DECK



### LOWER DECK



## Beluga Fernandina Itinerary



This itinerary focuses on the Central and Western Islands, including visits to Western Isabela and Ferndina Island, two of the highlights of the Galapagos Islands.

During this itinerary you will get the opportunity to take part in walking, hiking, snorkelling, swimming, wildlife & bird watching.

The wildlife highlights of this itinerary include, land iguanas, marine iguanas, lava lizards, sea lions, flamingos, penguins, flightless cormorant, brown pelican, Darwin finches, blue-footed boobies, swallow-tailed gulls, Galapagos hawk, Darwin finches.



**Please Note:**

Included: All meals and accommodation in double cabins while on board, welcome cocktail, all excursions and activities while on board, snorkelling gear, use of kayaks, bilingual naturalist guide.

Not Included: Galapagos National Park Entrance Fee: US\$100 per person (payable on arrival), drinks (anything that comes in a bottle), wet suits: US\$ 30 per person per week, tips guide and crew on board, personal expenses.





**Day 08 FLOREANA ISLAND**



**Full day excursion to Floreana Island**

Floreana Island is best known for its colourful history of buccaneers, whalers, convicts and early colonists. With two beaches and a large inland lagoon with a sizable population of pink flamingos, your first stop today is Punta Cormorant. Later you will visit Devil's Crown, known for fantastic snorkelling, this site is a completely submerged volcano that has eroded to give the appearance of a jagged crown. Your next stop is to Post Office Bay. This is one of the few sites in Galápagos that is visited for its human history. Here you will be able to visit the wooden barrel that has been used for centuries as an unofficial postal service.



**Day 09 ISABELA ISLAND**



**Morning excursion to Sierra Negra**

This morning's excursion takes you to Volcano Sierra Negra, with its impressive caldera measuring 10km across. Here you will be able to see recent lava flows and parasitic cones.

**Afternoon excursion to Puerto Villamil**

This charming town sits on a beautiful white beach. Here you will be able to visit the Tortoise Breeding Station and the flamingo lagoon. Other visits (depending on conditions) are the Tintoreras or Los Humedales.





**Day 10 ISABELA ISLAND**



**Morning excursion to Punta Moreno**

Punta Moreno is located in the central southwestern coast of Isabela Island. The site has spectacular views of volcanoes Alcedo, Sierra Negra and Cerro Azul. Some highlights include impressive lava flows, desolate and pristine landscape, varied and unusual arid zone vegetation.

**Afternoon excursion to Elizabeth Bay**

This spot is only accessible by dinghy. It is possible to see penguins on the small islets in the bay. The end of the bay is long and narrow surrounded by three species of mangroves. Galápagos turtles and rays can usually be seen in the water.



**Day 11 ISABELA ISLAND**



**Shared morning excursion to Urbina Bay**

Urbina Bay is located on the central-west coast of Isabela Island at the foothills of Alcedo and Darwin volcanoes. Highlights here include the colourful land iguanas, Galápagos giant tortoises and the coral uplifting from 1954.

**Shared afternoon excursion to the highlands of Tagas Cove**

Tagas Cove is a natural harbour where centuries ago whalers and pirates left their ship's names painted or carved on the rocks. A walk uphill to Darwin's Crater salt-water lake will provide an excellent view.





**Day 12 FERNANDINA ISLAND - ISABELA ISLAND**



**Shared morning excursion to Punta Espinoza, Fernandina Island**

Punta Espinoza is a place famous for its large colonies of marine iguanas and as the habitat of unique species like the flightless cormorant, Galapagos penguin, Galapagos hawk, Galapagos snake, among others.

**Shared afternoon excursion to Punta Vicente Roca, Isabela Island**

This site is visited by dinghy rides along the cliffs or the partially sunken cave at the water's edge. Nasca boobies, blue-footed boobies and flightless cormorants inhabit the shoreline.



**Day 13 SANTIAGO ISLAND - BARTOLOME ISLAND**



**Morning excursion to Puerto Egas**

Santiago Island is located between Isabela and Santa Cruz Islands and offers a wide variety of seabirds, marine iguanas and fur seals. You will land at Puerto Egas where a walk along the rocky coast line will you the chance to see some of Galápagos' best tide pools. Some highlights include Sugar loaf volcano, fur seals, oystercatchers, marine iguana colony and old salt mine.

**Afternoon excursion to Bartolome Island**

A hike will take you to the highest point on Bartolome for a spectacular view and you will be able to observe sea lions and penguins around Pinnacle Rock. Walk back down to the sandy beach for a swim or snorkel.



**Day 14** NORTH SEYMOUR ISLAND – BALTRA – GUAYAQUIL – OVERNIGHT FLIGHT



**Morning excursion to North Seymour**

This flat piece of land originated after an uplifting event thousands of years ago. The island is home to endemic Palo Santo trees, colonies of blue-footed boobies, swallow tailed gulls and magnificent frigate birds.

After returning from your excursion you will disembark the vessel and join a shared transfer to airport.



AV1633 Economy Dep: Baltra 10:05 Arr: Guayaquil 12:55

On arrival collect your bags and check-in for your return flights with KLM.



KL0751 Economy Dep: Guayaquil 18:40 Arr: Amsterdam 13:15 (+1 day)



**Day 15** AMSTERDAM - HEATHROW



KL1019 Economy Dep: Amsterdam 14:40 Arr: Heathrow 15:00

Arrive back in the UK.



# HOLIDAY COST

**£6,995 per person**

## **Suggested Itinerary**

- This is an estimated price based on low season rates & air fares.
- The price may vary depending on exact dates.
- This is a suggested itinerary which we can amend to fit your exact requirements.

## **Includes**

- International flights as listed.
- All pre-payable airport departure taxes.
- Hotel accommodation as listed.
- Transfers as listed (on a shared basis unless specified as private).
- Meals as listed.
- Excursions as listed (on a shared basis unless specified as private)
- \$20.00pp Galápagos Transit Control Card fee.

## **Excludes**

- Local departure taxes where applicable.
- Tips and gratuities.
- \$100.00pp USD Galápagos National Park entrance fee.
- Any future currency surcharges.
- Any future airline fare, tax or fuel surcharges.\*

*\*In the event of airfare /tax increases you will have the option to pay for your airfare in advance to avoid these increases.*

## **Please Note**

- The cost of this itinerary is based on 2 passengers sharing one room.
- All flights, accommodation and services are subject to availability at the time of booking.
- Air fares, taxes, schedules and routings are subject to change until ticket issue.
- All transfers are below 2 hours in duration unless otherwise stated.
- Half day tours are 5 hours or under in duration, full day tours are 6 hours or above.

## **Booking Conditions**

- Usually a deposit of 20% is required to secure a booking.
- The final balance would be due 10 weeks prior to departure.
- You can review our full booking conditions at: [www.distinctiveamericas.com](http://www.distinctiveamericas.com)

## **Financial & Consumer Protection**

- When you book with Distinctive World Travel you are safe in the knowledge that we are fully bonded with the Civil Aviation Authority and hold an Air Tour Operators Licence (ATOL 9027).

[www.caa.co.uk/ATOL 9027](http://www.caa.co.uk/ATOL 9027)

- We are a member of AITO (Association of Independent Tour Operators) which represents the UK's 140 top specialist tour operators and prides itself on providing the highest level of customer satisfaction by concentrating on: Choice, Quality and Service.

[www.aito.co.uk](http://www.aito.co.uk)