

DISTINCTIVE  
AMERICAS



LIVE IT, LOVE IT.  
LATIN AMERICA!

# CLASSIC PERU

from £4,745 pp

## Itinerary Summary





DAY	LOCATION	DETAILS	MEALS	HOTEL	NTS
01	FLIGHT	Overnight LATAM flight	-		-
02	LIMA	Afternoon at leisure	B	Casa Republica	2
03		Private half day city tour (inc. Larco Herrera)	B		
04	TAMBOPATA	Shared guided activities from lodge	BLD	Inkaterra Hacienda Concepcion	3
05					
06					
07	SACRED VALLEY	Transfer to the Sacred Valley	B	La Casona de Yucay	2
08		Shared Full Day Tour of the Sacred Valley	BL		
09	MACHU PICCHU	Inca Rail Premium & Lounge train to Aguas Calientes. Private Tour of Machu Picchu	BD	Inkaterra El MaPí	1
10	CUSCO	Morning re-entry to Machu Picchu	B	Tierra Viva Cusco Centro	2
11		Inca Rail 360 train & coach to Cusco	B		
		Private City tour inc. nearby Inca sites	B		
12	PUNO	PeruRail Titicaca train to Puno	BL	Casa Andina Premium Puno	2
13		Shared Full Day tour of Lake Titicaca	BL		
14	DEPART	Flight to Lima, LATAM flights to the UK	B		-
15	UK	Arrive back in the UK	B	-	





**Day 01** HEATHROW – OVERNIGHT FLIGHT



Depart UK.

	Flight No	LA8085	
	Airline	LATAM Airlines	
	Class	Economy	
	Seat Nos	TBA at check-in	
	Duration	11 hrs 55 mins	
	Departure	Heathrow (3)	20:05
	Arrival	Sao Paulo Intl	05:00 (+1 day)

**Please Note:** LATAM are expected to restart their direct Heathrow-Lima service from Oct 2024



**Day 02** SAO PAULO - LIMA

	Flight No	LA8098	
	Airline	LATAM Airlines	
	Class	Economy	
	Seat Nos	TBA at check-in	
	Duration	5 hrs 20 mins	
	Departure	Sao Paulo Intl	07:15
	Arrival	Lima	10:35

Private transfer to hotel (45 mins).

**Casa República**



**1 x Garden Superior Room on a Bed & Breakfast basis for 2-nights (early check-in subject to availability)**

Set in the bohemian Barranco district, Casa Republica is a beautiful 1920s boutique hotel modelled in the style of the glory days of Peru's Republican era. Located in a quiet street close to the district's best restaurants, galleries and nightlife, this hotel is perfect for those seeking respite from the hustle and bustle of Lima. Rooms have air-conditioning, WiFi and TV. Amenities include a bar and restaurant serving Peruvian cuisine.



Afternoon at leisure to walk and explore the shops, cafes, bars and restaurants of the charming Barranco area.





**Day 03** LIMA



**Private half day city tour (inc. visit to Larco Herrera Museum)**

Taking in the highlights of the city, you will visit the Main Square where Lima was first founded. Flanked by the Presidential Palace, the Archbishop's Palace and Lima Cathedral this is the ideal place to begin your exploration of the city. From here you will continue on to visit the Aliaga House, Saint Francis' Church and the Larco Herrera Museum. Located in the Pueblo Libre district, the museum is found inside a viceregal mansion and is home to the most complete pre-Hispanic collection of gold and silver artefacts.



The Museum is set in its own peaceful gardens and has an onsite restaurant which is a great place to enjoy a relaxed and delicious lunch after your tour has finished.





**Day 04** LIMA – PUERTO MALDONADO - TAMBOPATA

Private transfer to the airport (45 mins).

	Flight No	LA2260	
	Airline	LATAM Airlines	
	Class	Economy	
	Seat Nos	TBA at check-in	
	Duration	1 hr 40 mins	
	Departure	Lima	10:10
	Arrival	Puerto Maldonado	11:50

Shared transfer to the harbour (10 mins) to board your motorised canoe harbour to the lodge (25 mins).

Located within 819 hectares of natural rainforest, the rainforest acts as a buffer zone between the Tambopata National Park and the shores of the vast Madre de Dios River, making the location of this lodge feel wonderfully remote and peaceful.

**Please note:** 10kg per person luggage limit on the transfer to the lodge. Excess luggage can be securely stored at the lodge's reception centre in Puerto Maldonado until your return.

**Inkaterra Hacienda Concepción**



**1 x Standard Cabaña with Full Board & Shared Activities for 3-nights**

8km down river from Puerto Maldonado and positioned within walking distance of Lake Sandoval, Hacienda Concepción can only be reached by a scenic canoe ride from town. Hacienda Concepción has its own private 'Coche' (lake). Comprising of a main lodge with six rooms and 19 individual cabañas; all jungle facing, built in the typical Amazonian style; locally-crafted furnishings, high ceilings with hand-woven roofing. A varied menu of day-trips will introduce guests to the magic of the rainforest which has yet to be discovered.







**Days 05 – 06** TAMBOPATA

Shared guided activities from your lodge. Discuss with your guide about which excursions would best suit your individual requirements. You are able to choose between quarter and half day excursions which include hikes, boat rides, canopy walkways, birdwatching and night rainforest expeditions.



Hacienda Concepcion is set in the heart of the Tambopata National Reserve, where you will experience magnificent beauty in the sounds, scents, colours and solitude of the rainforest. You will find yourself surrounded by a vast environment, connecting with nature in an entirely new way. The reserve covers an area of 274,690 hectares stretching from the Andes mountains to Bolivia and borders the Bahuaja Sonene National Park. It is also close to the Manú National Park and Madidi National Park. A biodiversity hotspot, the reserve is one of the most biologically diverse areas in the world and the Peruvian government has officially recognised it as the Biodiversity Capital of the country.



According to current estimates by the conservationists Fauna Forever, the area is home to 160 species of mammals and at least 650 bird species. Other studies also report 1,200 butterfly species, over 150 species of amphibians and reptiles, and approximately 100 fish species, as well as over 10,000 species of plants.





**Day 07** TAMBOPATA – PUERTO MALDONADO – LIMA – CUSCO - SACRED VALLEY

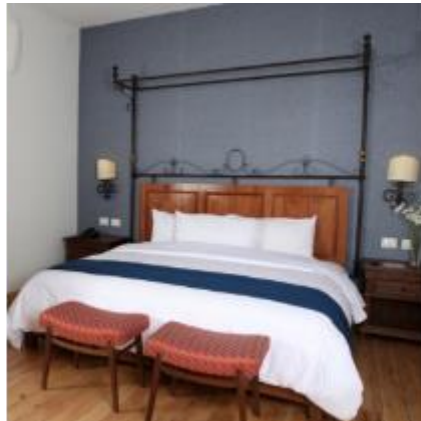
Shared motorised canoe transfer to the harbour (25 mins).  
Shared transfer to the airport (10 mins).

	Flight No	LA2261	
	Airline	LATAM Airlines	
	Class	Economy	
	Seat Nos	TBA at check-in	
	Duration	1 hr 35 mins	
	Departure	Puerto Maldonado	12:25
	Arrival	Lima	14:00

	Flight No	LA2609	
	Airline	LATAM Airlines	
	Class	Economy	
	Seat Nos	TBA at check-in	
	Duration	1 hr 20 mins	
	Departure	Lima	14:50
	Arrival	Cusco	16:10

Private transfer to the Sacred Valley and your hotel (1 hr 20 mins)

**La Casona de Yucay**



**1 x Standard Room on a Bed & Breakfast basis for 2-nights**

Built against a mountainside and located in an 18<sup>th</sup> Century building, this hotel features cosy modern accommodation set around a colourful courtyard. The 51 rooms feature natural wooden floors and large windows offering panoramic garden and mountain views. Guests are invited to an extensive buffet breakfast in the restaurant which also serves regional and international dishes during the evening.







**Day 08** SACRED VALLEY



**Shared Full Day tour to Ollantaytambo & Chinchero (inc. lunch)**

This morning you will be collected to visit the town of Chinchero, which enjoys beautiful views of the valley. The inhabitants of this area preserve the artisan traditions and the inherited knowledge of the Incas, displaying them in their clothes and customs. In Chinchero there are also archaeological remains and a beautiful 17th Century church.



After this, you'll be taken to Ollantaytambo, making a stop at the Raqchi viewpoint. In Ollantaytambo you can climb the iconic fortress. Have lunch in Ollantaytambo and then return to your hotel in the afternoon.





**Day 09** SACRED VALLEY – OLLANTAYTAMBO – AGUAS CALIENTES – MACHU PICCHU

Check out and leave excess luggage at reception, to be transferred to your hotel in Cusco for secure storage.  
Private transfer to the train station (20 mins).



	<b>Train</b>	<u>INCA RAIL Premium &amp; Lounge</u>	<u>Luggage: 1 bag (8kg per person / 118cm dimensions)</u>
	<b>Duration</b>	1 hr 26 mins	
	<b>Departure</b>	Ollantaytambo	11:15
	<b>Arrival</b>	Aguas Calientes	12:41

Travel with maximum comfort and space on board the Inca Rail Premium & Lounge train. You will have priority boarding, wide comfortable seats and large windows. There is also a luxurious Observatory-Lounge carriage that offers live music, a bar and a balcony to admire the passing scenery.

On arrival at Aguas Calientes station leave your main luggage with hotel staff to transfer to your hotel.

Macchu Picchu entry restrictions: You can only take a small day pack into Machu Picchu (for water, sunblock, snacks etc).

Your guide will meet you at the station and walk with you to the bus stop (5 mins).



Board a shared shuttle bus transfer up to Machu Picchu citadel (30 mins).





**CONT...** SACRED VALLEY – OLLANTAYTAMBO – AGUAS CALIENTES – MACHU PICCHU



### **Private afternoon tour of Machu Picchu (3 hrs)**

Enjoy a three-hour guided tour of this magnificent and mysterious Inca citadel. Starting your tour in the afternoon means that you will be able to enjoy the site without the crowds. Your guide will explain the three different route options for your tour and together you will decide which one to take - there is no need to pre-book a particular route in advance. During your tour your knowledgeable guide will explain the history of the site and Inca culture.

After your tour board a shared bus transfer back to town (30 mins) and walk to your hotel (5 mins).

**El MaPí by Inkaterra**



### **1 x Superior Deluxe Room on a Half Board basis for 1-night**

El MaPí is a smart and contemporary hotel located just a few steps from the main square and the train station. There are 48 bright and airy rooms and a comfortable lounge / bar and informal cafe serving a range of food and drinks throughout the day. Spa del Bosque is located on the top floor and offers panoramic views.





**Day 10** MACHU PICCHU – OLLANTAYTAMBO – CUSCO

Check out of your hotel and leave your main bags in storage at reception.



**Half day un-guided re-entry to Machu Picchu & Huayna Picchu (inc. bus tickets & permits)**

You will be able to spend more time exploring Machu Picchu this morning, this time unguided. Rise early if you can, as arriving at dawn means that if the sky is clear you may be lucky enough to see an amazing sunrise.

You will also have the chance to climb the towering peak of Huayna Picchu. This two-hour round trip is up steep, exposed steps and not for the faint-hearted! However the reward for your efforts is a truly unique and awe-inspiring 'condor's eye' view of the site below. Well worth every step!

**Re-entry regulations:**

- You'll need to show yesterday's entry ticket, plus today's re-entry ticket and your Huayna Picchu permit.
- There are two start times to climb Huayna Picchu: 07:00 - 08:00 & 10:00 - 11:00. Make sure you arrive on time!
- You have up to 3 hours to complete the climb and return to the start point.

Board a shared shuttle bus back to town (30 mins).

Walk to the train station (5 mins).



	<b>Train</b>	<b><u>INCA RAIL The 360°</u></b>	<b><u>Luggage: 1 bag (8kg per person / 118cm dimensions)</u></b>
	<b>Duration</b>	<b>1 hr 9 mins</b>	
	<b>Departure</b>	<b>Aguas Calientes</b>	<b>16:11</b>
	<b>Arrival</b>	<b>Ollantaytambo</b>	<b>17:20</b>

The 360° train offers wider and taller panoramic windows and an observation outdoor carriage including a bar. The only train in Peru with an entertainment app on board which will allow you to learn more about the train journey and the Inca civilisation. Enjoy an appetizing selection of cold and warm drinks, prepared using fruit juices and Andean herbs, and delicious gourmet organic delights made with products from the Sacred Valley.





**CONT...** MACHU PICCHU – OLLANTAYTAMBO – CUSCO

Disembark at Ollantaytambo, board a shared road transfer to Cusco (1.5hrs)

Tierra Viva Cusco Centro



**1 x Standard Room on a Bed & Breakfast basis for 2-nights**

This hotel is located 4 blocks from the main square, 20 minutes from the airport and is close to the churches, squares and markets (especially San Pedro Market). The hotel has 43 fully equipped rooms with views of one of its 3 beautiful colonial patios or Cruz Verde Street. Buffet breakfast is served from 05:00am – 10:00am, hot drinks station available 24 hours a day in the lobby.



**Day 11** CUSCO



**Private half day city tour inc. nearby Inca sites**

Known as the Temple of the Sun, your first stop today is to Koricancha where the Sun was worshipped during Inca times. Continue on your tour as you visit one of the most splendid Spanish colonial churches in the Americas; Cusco Cathedral. Located on the main square, it houses about 400 colonial painting from the Cusco art school, impressive gold, silver and precious stone works. You will then head to the Sacsayhuamán fortress, an emblematic work of the Incas, which protected the Holy City. Sacsayhuamán was built with megalithic blocks, which transportation and construction continue to be a mystery.





**Day 12** CUSCO – PUNO (LAKE TITICACA)

Private transfer to the train station (20 mins) to board your train.



	Train	<u>PERU RAIL Titicaca Train</u>	<u>Luggage: 23kg hold / 8kg carry on</u>
	Duration	10 hrs 20 mins	
	Departure	Cusco	07:10
	Arrival	Puno	17:40

Crossing the Andes on the Cusco to Puno PeruRail Titicaca train service is an unforgettable experience. The train features an open-air observatory car and a bar car, allowing you to take in the majestic views while enjoying the typical music and dances of the Peruvian highlands, as well as a cocktail or two! During your trip, you will have the chance to take panoramic pictures of some of the quintessential Andean landscapes.



The route covered by the train is considered to be one of the most beautiful in the world, with a trip that lasts ten and a half hours. At the start of the journey, you are welcomed at Cusco Station, where local musicians will provide background music as you board the train. Once aboard, you can enjoy the two dining cars decorated in the style of the Pullman cars of the 1920s. Also, during the trip, you will have the finest in gourmet food during a delicious lunch, later followed by afternoon tea .

Cusco - Puno schedule: Wed, Fri & Sun only





**CONT...** CUSCO – PUNO (LAKE TITICACA)

Shared transfer to hotel on arrival (10 mins).

Casa Andina Premium - Puno



**1 x Superior Room with Lake View on a Bed & Breakfast basis for 2-nights**

Nestled on the shores of Lake Titicaca, at an altitude of 3,800m, Casa Andina Premium Puno offers high quality accommodation and spectacular views. The hotel boasts its own private pier for boat excursions to other islands and has its own private train station. There are 45 rooms with views of Lake Titicaca or the gardens as well as coffee-making facilities, in-room safe, private bathroom with bath and hairdryer. The hotel restaurant has large windows with stunning views of the lake and serves traditional Peruvian dishes using local ingredients as well as contemporary haute cuisine. There is also a cosy bar area with open fire for relaxing and unwinding in with a cocktail in the evenings.







**Day 13** PUNO (LAKE TITICACA)



**Shared full day excursion to Uros & Taquile Islands**

Your guide will take you by boat to visit the legendary floating islands of Uros and meet one of traditional families that live there. The people of Uros are a proud culture who due to persecution by other groups found refuge by living on manmade reed islands many years ago. They call themselves kotsuña or people of the lake who claim to have black blood, as they are immune to the cold and consider themselves to be owners of the lake and its waters. Learn about their history and culture and how they build their islands from totora reeds.



You will then visit Taquile island where you will see and learn about the finely detailed textiles that are unique to the area, which have recently been protected by UNESCO. You will enjoy lunch outdoors with fantastic views of the lake and Bolivia's Cordillera Real in the distance. Afterwards you will return to your hotel by boat.





**Day 14** PUNO – JULIACA – LIMA – OVERNIGHT FLIGHT

Private transfer to the airport (1.5hrs).

	Flight No	LA2026	
	Airline	LATAM Airlines	
	Class	Economy	
	Seat Nos	TBA at check-in	
	Duration	1 hr 35 mins	
	Departure	Juliaca	08:45
	Arrival	Lima	10:20

	Flight No	LA8099	
	Airline	LATAM Airlines	
	Class	Economy	
	Seat Nos	TBA at check-in	
	Duration	4 hrs	
	Departure	Lima	12:50
	Arrival	Sao Paulo Intl	19:50

	Flight No	LA8084	
	Airline	LATAM Airlines	
	Class	Economy	
	Seat Nos	TBA at check-in	
	Duration	10 hrs 20 mins	
	Departure	Sao Paulo Intl	23:45
	Arrival	Heathrow (3)	14:05 (+1 day)



**Day 15** HEATHROW

Arrive in the UK.



# HOLIDAY COST

## from £4,745 per person

---

### **Suggested Itinerary**

- This is an estimated holiday cost based on low season rates and air fares.
- The cost is based on two people sharing 1 x Double / Twin Room throughout the itinerary.
- The price may vary depending on exact dates.
- This is a suggested itinerary which we can tailor to your exact requirements.

### **Includes**

- All flights as listed.
- All pre-payable airport departure taxes.
- Hotel accommodation as listed.
- Transfers as listed (on a shared basis unless specified as private).
- Meals as listed.
- Excursions as listed (on a shared basis unless specified as private).

### **Excludes**

- Local departure taxes where applicable.
- Tips and gratuities.

### **Booking Conditions**

- A deposit of around 10-20% is usually required to secure a booking.
- The final balance would be due 10 weeks prior to departure.
- You can review our full booking conditions at: [www.distinctiveamericas.com](http://www.distinctiveamericas.com).

### **Quote Details**

- All flights, accommodation and services are subject to availability at the time of booking.
- Air fares, taxes, schedules and routings are subject to change until ticket issue.
- The price of this itinerary is based on 2 people travelling together.
- During your holiday there will be times when you will be at high altitude.
- Altitude sickness can and often does occur. We would recommend seeking medical advice prior to travel.

### **Passenger Information**

- Please ensure that passenger names are exactly as per passport.
- Please provide full passport details on confirmation of booking.

### **Financial & Consumer Protection**

- When you book with Distinctive World Travel you are safe in the knowledge that we are fully bonded with the Civil Aviation Authority and hold an Air Tour Operators Licence (ATOL 9027).  
[www.caa.co.uk/ATOL 9027](http://www.caa.co.uk/ATOL 9027)
- We are a member of AITO (Association of Independent Tour Operators) which represents the UK's 120 top specialist tour operators and prides itself on providing the highest level of customer satisfaction by concentrating on: Choice, Quality and Service.  
[www.aito.co.uk](http://www.aito.co.uk)